

METACRYLICS

SILICONE ROOF TOP PENETRATION ROOF DETAILS

SILICON
SYSTEM
DETAILS

SEAL:

DRAWING INDEX:

- C-01 - COVER PAGE & DRAWING INDEX SHEET
- A-01 - WALKING PAD
- A-02 - METAL PARAPET CAP AND BASE FLASHING
- A-03 - SKYLIGHT
- A-04 - PLUMBING VENT
- A-05 - ROOF DRAIN
- A-06 - SCUPPER
- A-07 - CURB
- A-08 - RAISED CURB FOR ROOFTOP EQUIPMENT
- A-09 - BASE FLASHING WITH COUNTER FLASHING
- A-10 - ROOF PERIMETER EDGE
- A-11 - GUTTER

REV:

JOB NUMBER:

SCALE:

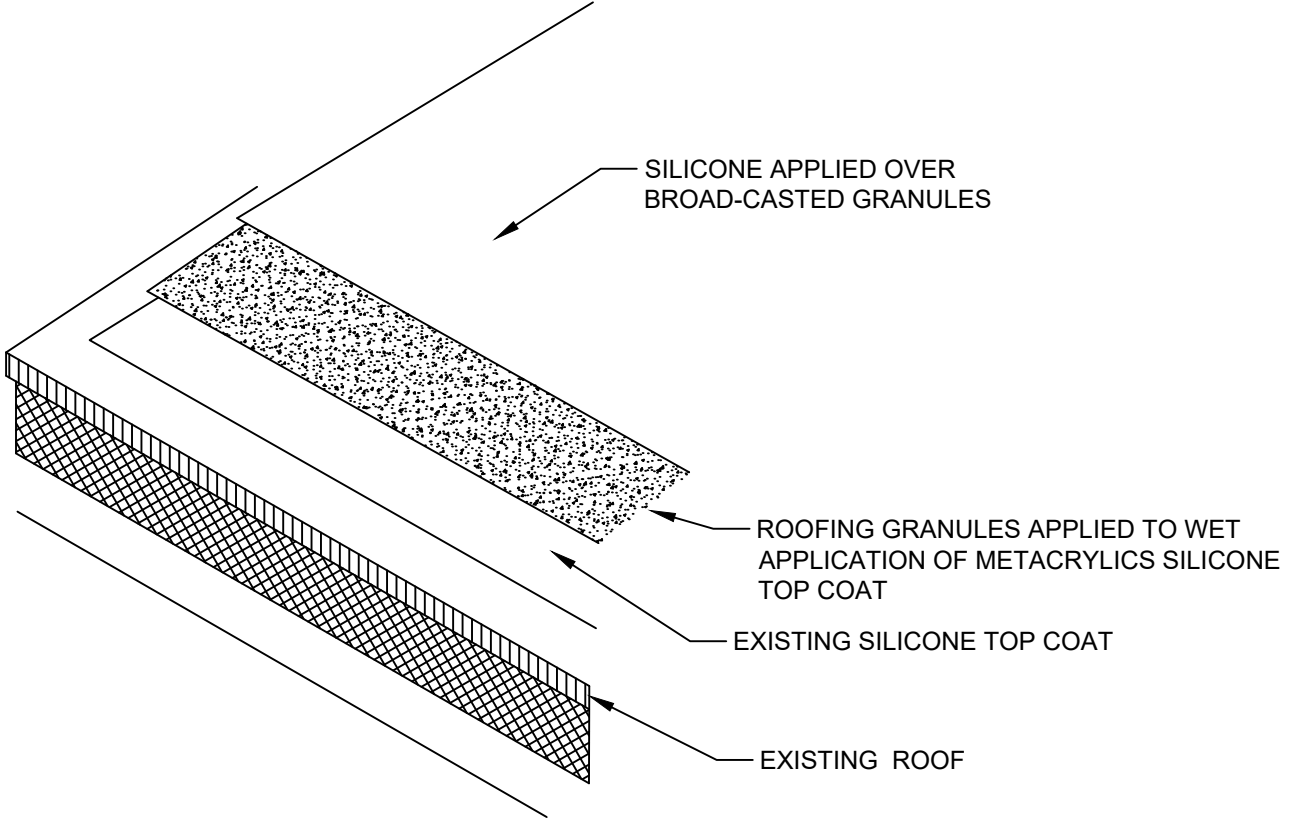
DATE: 09-25-17

DRAWN BY:
DHALSELL

CHECKED BY:

SHEET:

C-01



SILICONE SYSTEM DETAILS

SEAL:

REV:

JOB NUMBER:

SCALE:

DATE: 09-25-17

DRAWN BY: DHALSELL

CHECKED BY:

SHEET:
A-01

WALKING PAD

**SILICONE
SYSTEM
DETAILS**

SEAL:

REV:

JOB NUMBER:

SCALE:

DATE: 09-25-17

DRAWN BY: DHALSELL

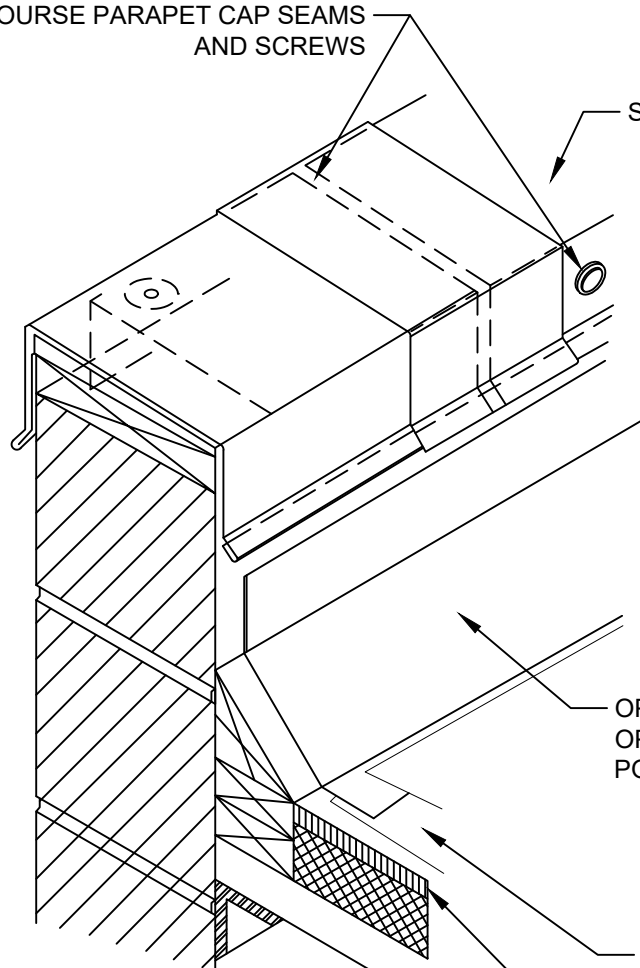
CHECKED BY:

SHEET:

A-02

3-COURSE PARAPET CAP SEAMS
AND SCREWS

SHEET METAL PARAPET CAP



OPTION 1 - SILICON GEL (SEE NOTE 1)
OPTION 2 - 3 COURSE WITH SILICON AND
POLYESTER FABRIC

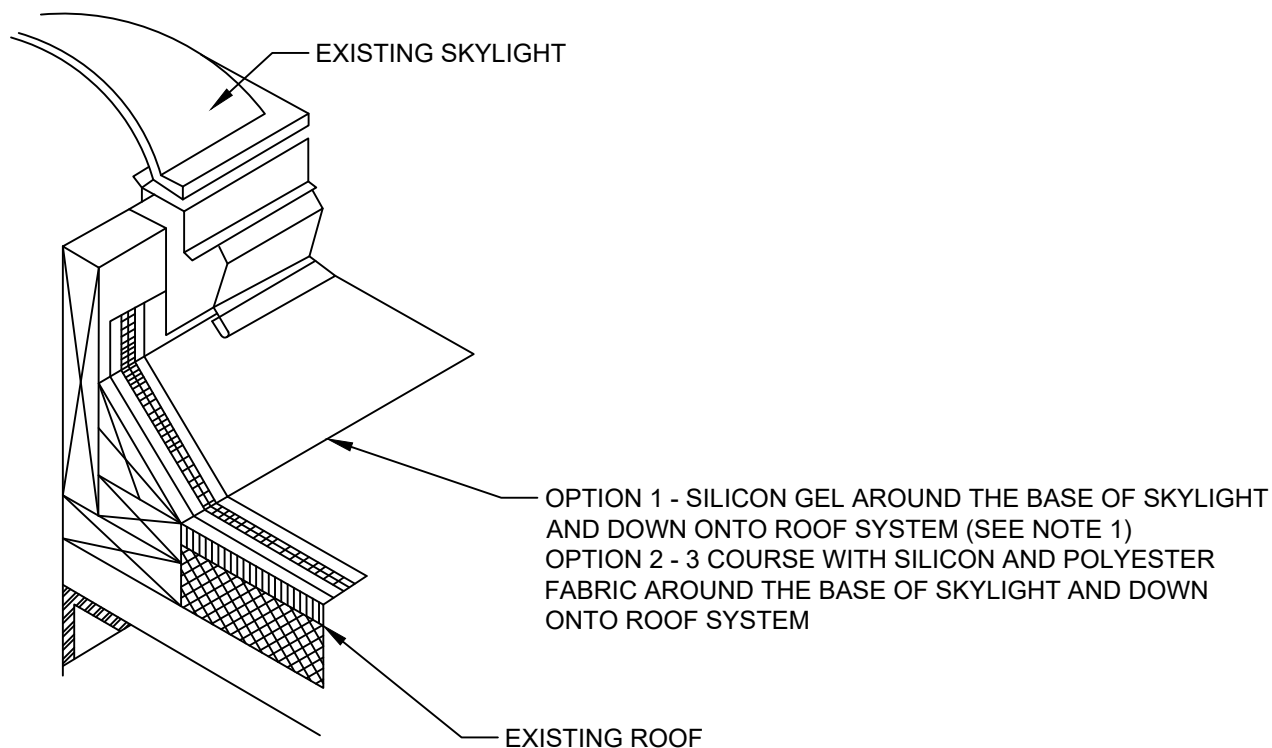
PRIMER

EXISTING ROOF

METAL PARPAPET CAP & BASE FLASHING

NOTES:

1. THE PRIMER APPLICATION IS REQUIRED BEFORE THE 3-COURSING IS STARTED



**SILICONE
SYSTEM
DETAILS**

SEAL:

REV:

JOB NUMBER:

SCALE:

DATE: 09-25-17

DRAWN BY: DHALSELL

CHECKED BY:

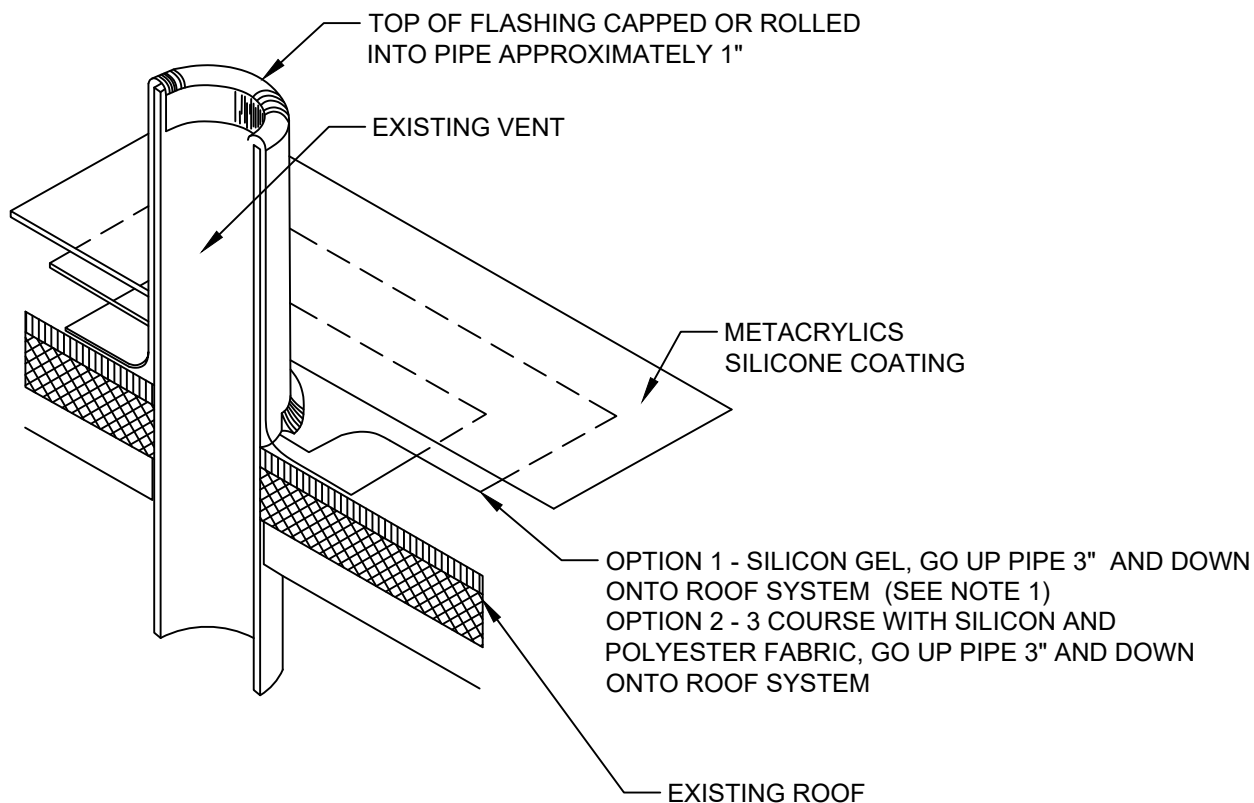
SHEET:

A-03

SKYLIGHT

NOTES:

1. THE PRIMER APPLICATION IS REQUIRED BEFORE THE 3-COURSING IS STARTED



SILICONE SYSTEM DETAILS

SEAL:

REV:

JOB NUMBER:

SCALE:

DATE: 09-25-17

DRAWN BY: DHALSELL

CHECKED BY:

SHEET:

A-04

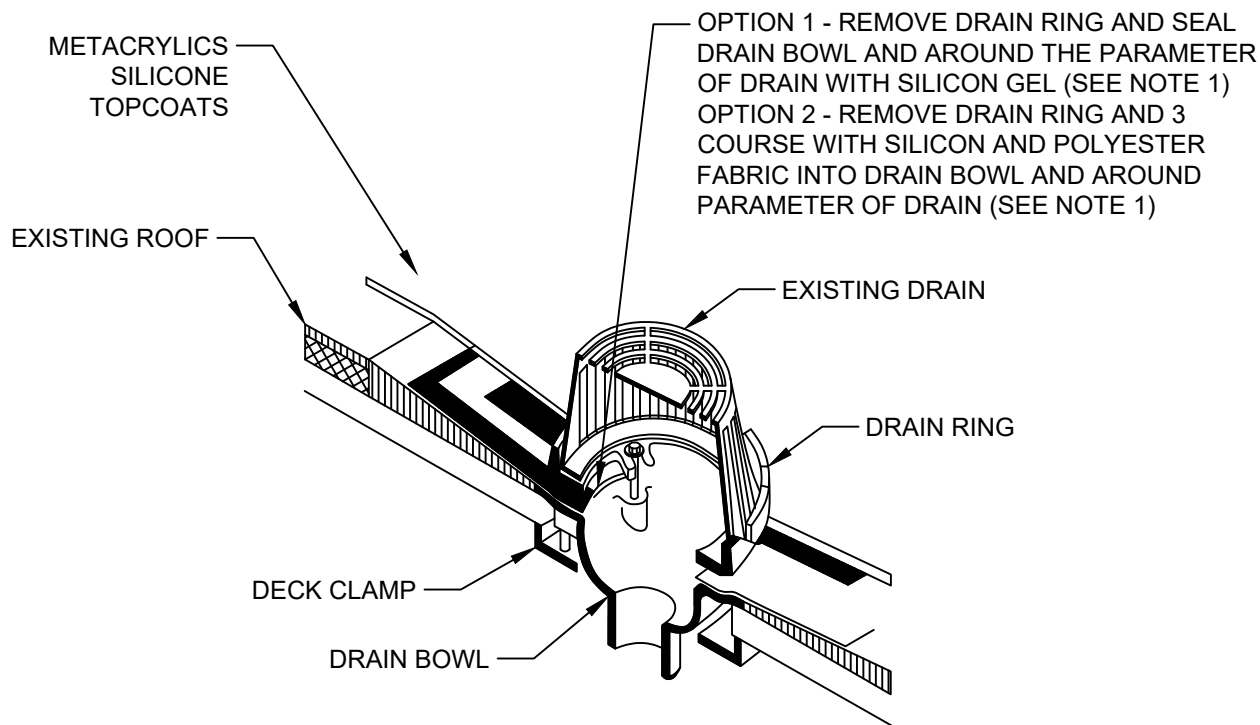
PLUMBING VENT

NOTES:

1. THE PRIMER APPLICATION IS REQUIRED BEFORE THE 3-COURSING IS STARTED



SILICONE SYSTEM DETAILS



ROOF DRAIN

SEAL:

REV:

JOB NUMBER:

SCALE:

DATE: 09-25-17

DRAWN BY: DHALSELL

CHECKED BY:

SHEET:

A-05

NOTES:

1. THE PRIMER APPLICATION IS REQUIRED BEFORE THE 3-COURSING IS STARTED

**SILICONE
SYSTEM
DETAILS**

SEAL:

REV:

JOB NUMBER:

SCALE:

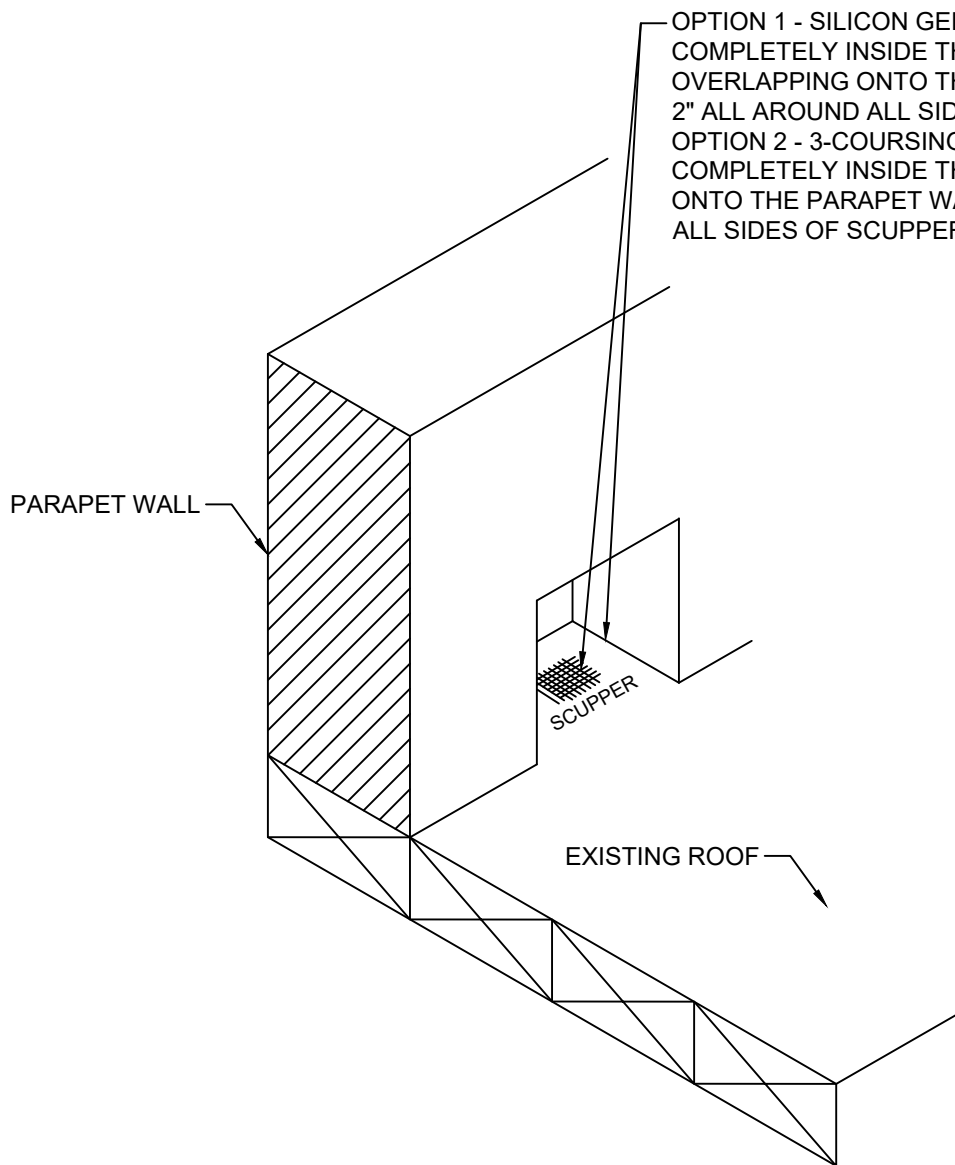
DATE: 09-25-17

DRAWN BY: DHALSELL

CHECKED BY:

SHEET:

A-06

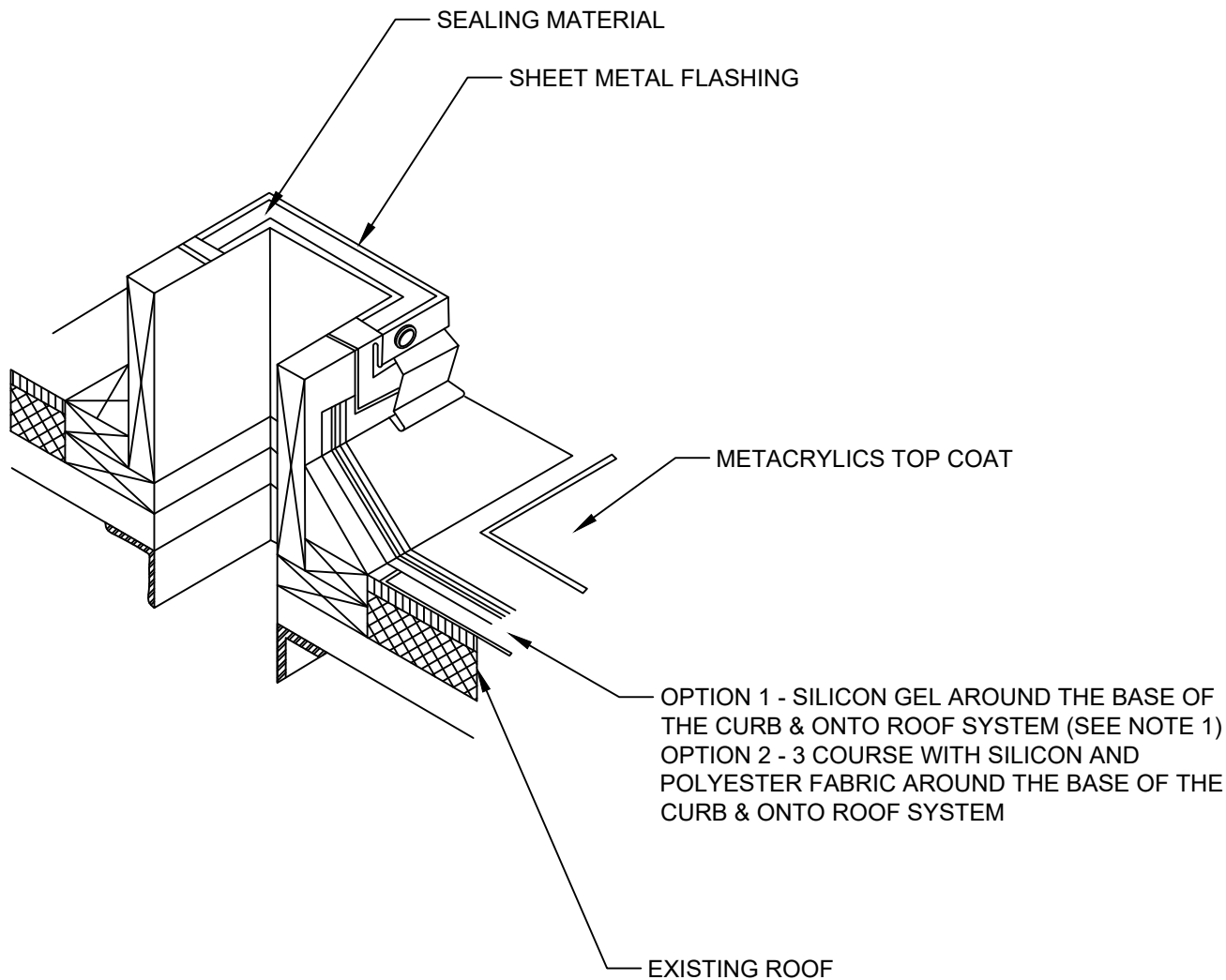


OPTION 1 - SILICON GEL (SEE NOTE 1)
COMPLETELY INSIDE THE SCUPPER
OVERLAPPING ONTO THE PARAPET WALL AT LEAST
2" ALL AROUND ALL SIDES OF SCUPPER
OPTION 2 - 3-COURSING WITH SILICONE AND FABRIC
COMPLETELY INSIDE THE SCUPPER OVERLAPPING
ONTO THE PARAPET WALL AT LEAST 2" ALL AROUND
ALL SIDES OF SCUPPER. (SEE NOTE 1)

SCUPPER

NOTES:

1. THE PRIMER APPLICATION IS REQUIRED BEFORE THE 3-COURSING IS STARTED



**SILICONE
SYSTEM
DETAILS**

SEAL:

REV:

JOB NUMBER:

SCALE:

DATE: 09-25-17

DRAWN BY: DHALSELL

CHECKED BY:

SHEET:

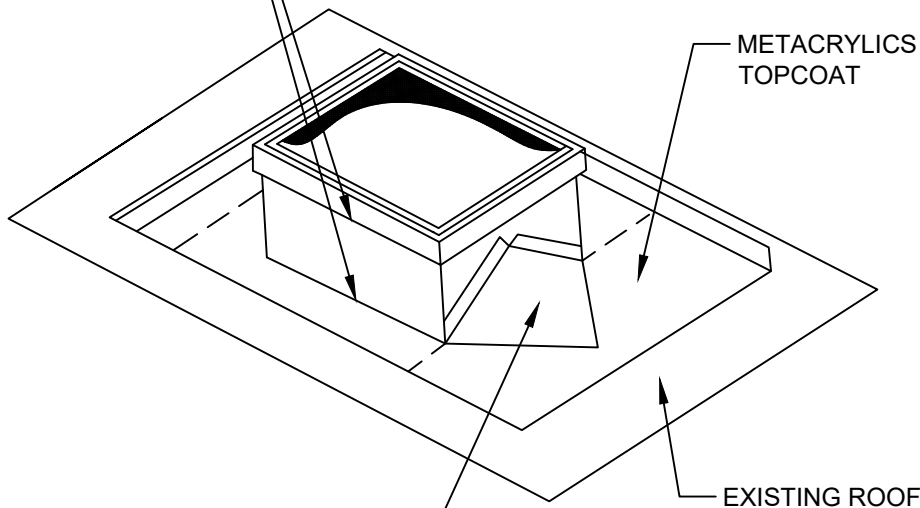
A-07

CURB

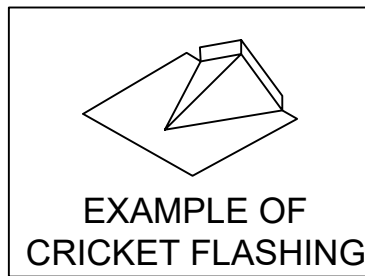
NOTES:

1. THE PRIMER APPLICATION IS REQUIRED BEFORE THE 3-COURSING IS STARTED

OPTION 1 - SILICON GEL (SEE NOTE 1)
OVERLAPPED JOINTS INCLUDING
PERIMETER OF CURB
OPTION 2 - 3 COURSE WITH SILICON AND
POLYESTER FABRIC OVERLAPPED JOINTS
INCLUDING PERIMETER OF CURB



OPTION 1 - SILICON GEL PERIMETER OF
CRICKET AND ALL CRICKET SEAMS (SEE NOTE 1)
OPTION 2 - 3 COURSE WITH SILICON AND
POLYESTER FABRIC PERIMETER OF CRICKET
AND ALL CRICKET SEAMS



**SILICONE
SYSTEM
DETAILS**

SEAL:

REV:

JOB NUMBER:

SCALE:

DATE: 09-25-17

DRAWN BY:
DHALSELL

CHECKED BY:

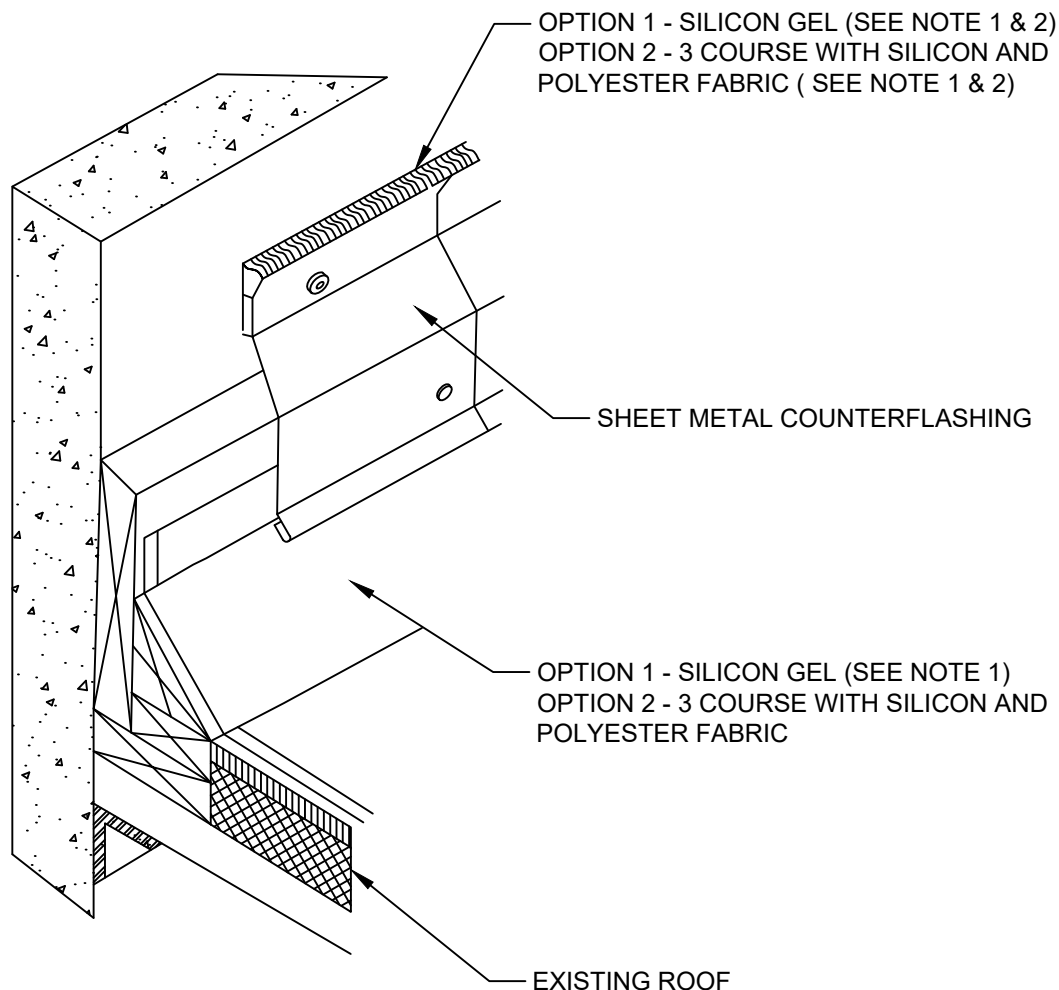
SHEET:

A-08

RAISED CURB FOR ROOFTOP EQUIPMENT

NOTES:

1. THE PRIMER APPLICATION IS REQUIRED BEFORE THE 3-COURSE IS STARTED



SILICONE SYSTEM DETAILS

SEAL:

REV:

JOB NUMBER:

SCALE:

DATE: 09-25-17

DRAWN BY: DHALSELL

CHECKED BY:

SHEET:

A-09

BASE FLASHING WITH COUNTER FLASHING

NOTES:

1. THE PRIMER APPLICATION IS REQUIRED BEFORE THE 3-COURSING IS STARTED
2. TOP OF THE FLASHING NEEDS TO BE SEALED TO WALL



SILICONE
SYSTEM
DETAILS

SEAL:

REV:

JOB NUMBER:

SCALE:

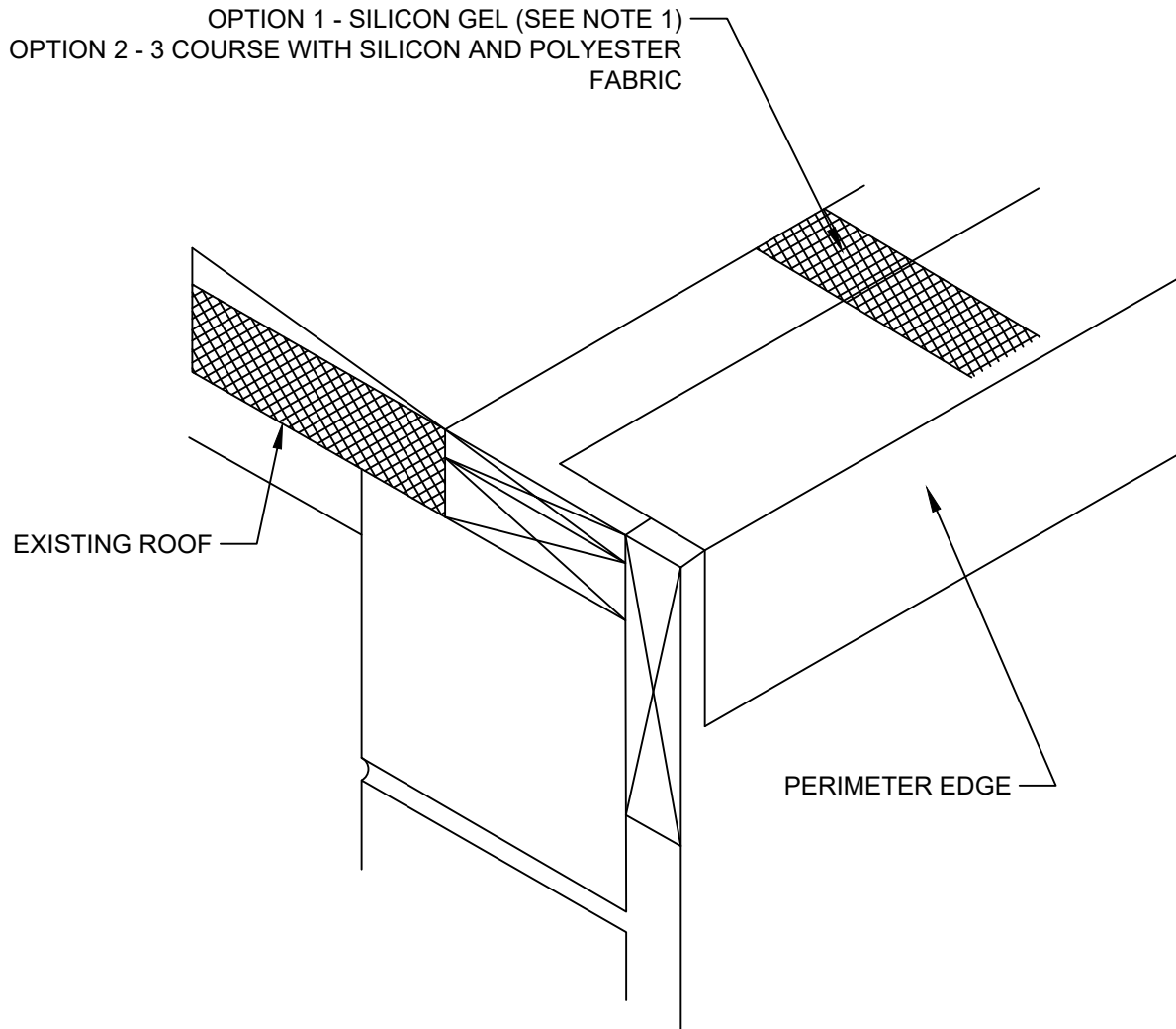
DATE: 09-25-17

DRAWN BY: DHALSELL

CHECKED BY:

SHEET:

A-10



ROOF PERIMETER EDGE

NOTES:

1. THE PRIMER APPLICATION IS REQUIRED BEFORE THE 3-COURSING IS STARTED

SILICONE SYSTEM DETAILS

SEAL:

REV:

JOB NUMBER:

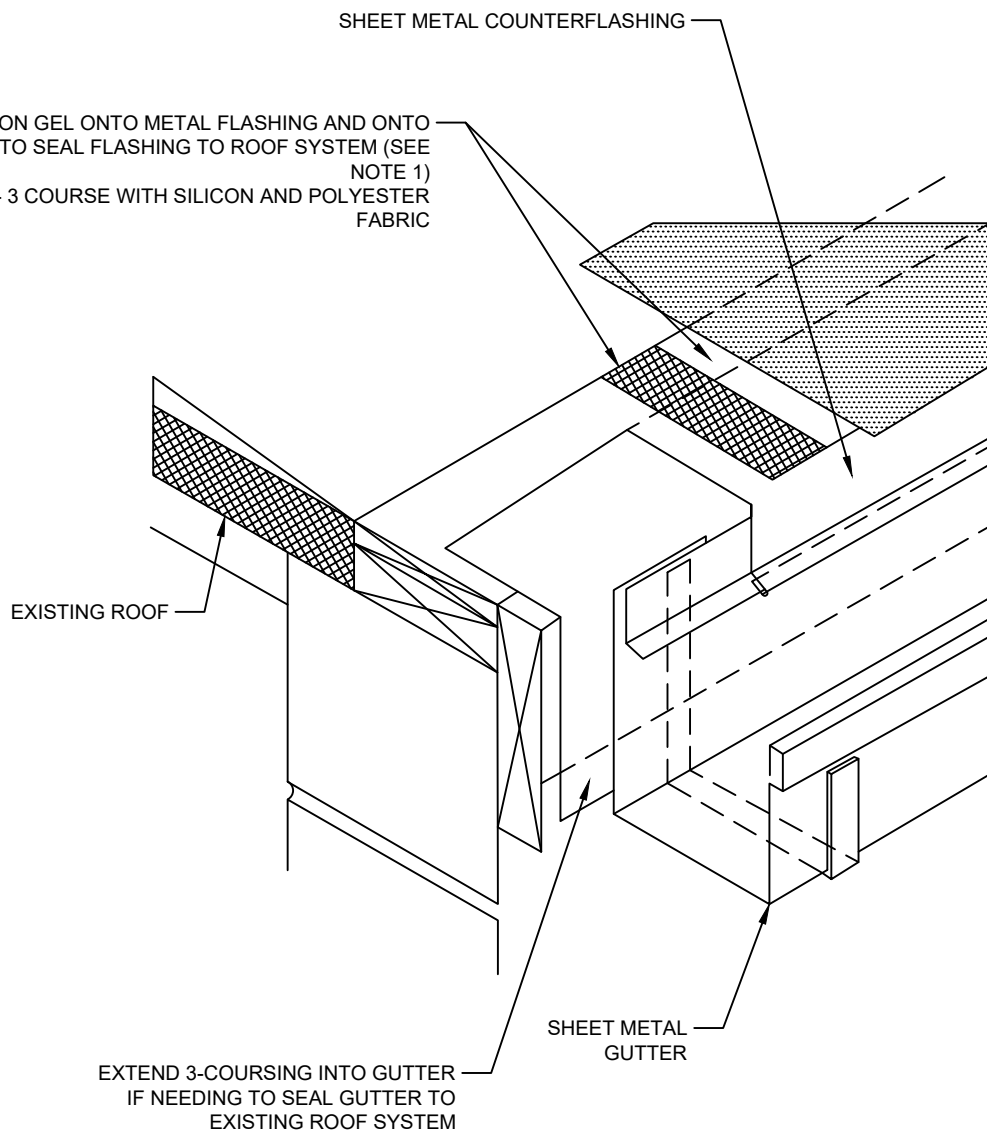
SCALE:

DATE: 09-25-17

DRAWN BY: DHALSELL

CHECKED BY:

SHEET:
A-11



GUTTER

NOTES:

1. THE PRIMER APPLICATION IS REQUIRED BEFORE THE 3-COURSING IS STARTED
2. NEW METAL DRIP EDGE OR PARAMETER FLASHING NEEDS TO BE TREATED WITH EITHER VINEGAR OR A PRODUCT THAT WILL REMOVE THE OILY RESIDUE BEFORE PROCEEDING TO APPLY COATING PRODUCTS OVER THE NEW METAL SURFACE.