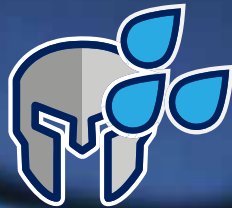




SPECIFICATION GRADE ACRYLIC & SILICONE ROOF COATING SOLUTIONS



Pond Armor™



OVER 10,000 ACRYLIC ROOF COATING SYSTEMS INSTALLED SINCE 1976

For more than 40 years, Metacrylics® has set the standard for energy efficient coatings by combining innovative formulations with the industry's most comprehensive project support. Metacrylics® develops and supplies sustainable solutions with specification-grade performance, utilizing specification-grade materials and never sacrificing quality.

Metacrylics is a division of IPS Corporation.

SUSTAINABLE COOL ROOF SYSTEMS



WITHSTANDS PONDING WATER

Metacrylics formula contains premium resins and other raw materials which create a system which performs under ponding water conditions.

Metacrylics has no exclusions for ponding water on warranties up to 30 years.

NO ZINC OXIDE

The Environmental Protection Agency has identified zinc oxide as a hazardous waste material. Metacrylics® acrylic coatings are formulated without zinc oxide and other hazardous chemicals. By excluding zinc oxide, Metacrylics acrylic coatings provide...

- Better adhesion in ponding conditions
- Higher performance fungicides for increased mold and mildew resistance

TOTAL SERVICE™ TECHNICAL SUPPORT

At Metacrylics, it is our mission to deliver unrivaled support, remaining committed to providing those involved in the project from building owners to installers with the expert advice needed to succeed.

Consultation: We help assess projects to determine which system is needed. We understand that not every job is the same and work to provide solutions for any roof project, common or unique.

Training: Depending on the size of the job and the system used, we provide applicator training to ensure proper installation.

Technical Assistance: In consideration of the complexity of each project we provide virtual and hands on technical support during installation.

Inspection: We may walk and inspect the work to make sure the installation was done properly and certify the job for warranty.

Follow-Up: Long after the completion of the project, we continue to check in and make sure the system is performing as expected. For our renewable warranty options, we will re-inspect roofs when needed to determine the best option for extending the life of the roof system.

Our Total Service™ approach, combined with our specification grade products, is what separates Metacrylics® when it comes to customer satisfaction.

OUR CUSTOMERS

- | | | |
|-----------------------------|----------------------------|----------------------------------|
| • U.S. Navy | • U.S. Army | • U.S. Air Force |
| • NASA | • FAA | • City of San Francisco |
| • County of Santa Clara | • Apple Inc | • Pixar Studios |
| • US Borax Corporation | • United Technologies | • Santa Clara University |
| • Lawrence Livermore Labs | • SFO Int'l Airport | • Unisys Corporation |
| • Foster Farms | • Stanford University | • Lick Observatory |
| • Disneyland | • Morgan Stanley | • Hewlett Packard |
| • Cisco Systems | • Hubble Space Telescope | • Langendorf Bakeries |
| • Monterey Mushrooms | • Memorex | • University of Colorado Boulder |
| • IBM | • Intel | • E-Base 2041 Antarctica |
| • Lockheed Martin | • Anritsu Corporation | • Southern Methodist University |
| • San Jose State University | • University Texas El Paso | • Texas Christian University |
| • University of California | • IKEA | • Telluride Ski Resort |
| • Mervyn's Shopping Center | • Mimco Inc. | • Los Alamos Labs |
| • Lowes / Orchard Supply | | |



Part 6 Cool Roof Compliant

METACRYLICS *EXTENDS THE LIFE OF THE ROOF*

DURABLE: Metacrylics® offers renewable warranty options up to 30 years. Metacrylics® coatings stop leaks, withstand ponding water, and carry a wide range of certifications.

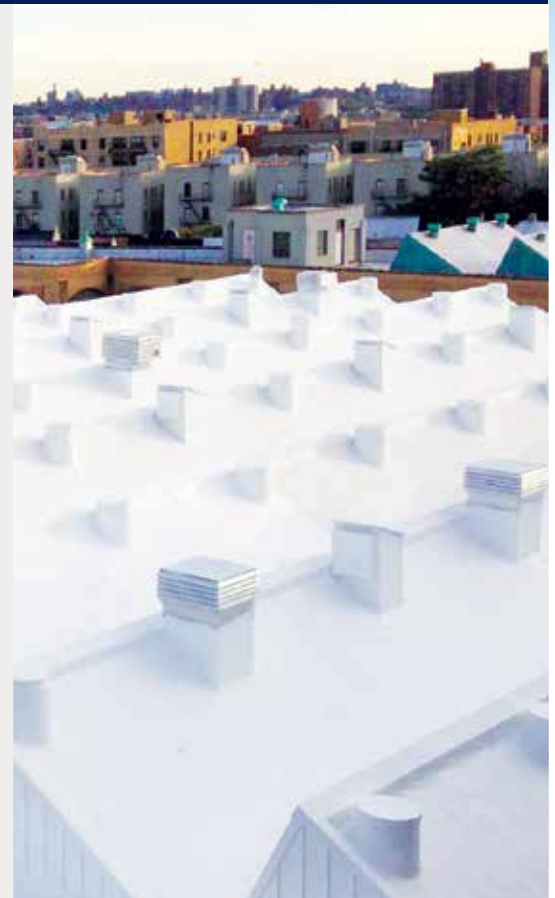
FLEXIBLE: Our specification grade system maintains strong adhesion to nearly any roofing surface in any climate, withstanding building and roof movement, expansion, and contraction.

ENERGY EFFICIENT: 90%+ reflectivity can provide up to 30% and more energy savings by reducing roof temperature and AC usage.

COMPLIANT: ICC-ES, Energy Star, Miami Dade County Approved, UL Class A Fire Rated, Title 24 Part 6 Cool Roof Compliant. No zinc oxide.

QUALITY ASSURED: UL performs regular manufacturing inspections to assure that all products are made using the same chemical formula and are uniform in quality.

SEAMLESS: Layered monolithic roof system with no seams or other potential leak points.



BEFORE



AFTER

FEATURES & BENEFITS

- | | |
|---|--|
| • Withstands ponding conditions | • No harmful zinc oxide or solvents |
| • 40+ years of coating experience | • Up to 30 year renewable warranties available |
| • Total Service™ Technical Support | • Easy spray, roll, or brush application |
| • Save up to 30% and more on energy costs | • Extends roof lifespan |
| • Meets all hazardous requirements | • Avoids costly tear-offs |

METACRYLICS WATERPROOFING SYSTEM APPLICATION



Power Wash



Prime, Repair & Seal



Coating or Fabric Reinforced



Final Coat Application

PROTECT YOUR ROOF WITH METACRYLICS POND ARMOR!



Pond Armor™

Metacrylics Pond Armor formula contains premium resins and other raw materials to create a system which performs under ponding water conditions.



- NO WARRANTY EXCLUSIONS FOR PONDING WATER
- MAXIMUM PROTECTION - UP TO 30 YEAR NDL WARRANTY
- OVER 40 YEARS OF ROOF COATING EXPERIENCE

METACRYLICS FAMILY OF PRODUCTS



TOP COATS



EXTREME PERFORMANCE + ACRYLIC WHITE is a white acrylic elastomer coating that is non-volatile and offers our best mechanical properties tensile strength, elongation and tear resistance. Extreme Performance withstands ponding water and is usable on nearly any roofing surface.



EXTREME WEATHER ACRYLIC WHITE is a white acrylic elastomeric coating that is non-volatile and provides better adhesion, durability, and reflectivity. Extreme Weather Acrylic withstands ponding water and is usable on nearly any roofing surface.



Q COAT™ is a fast setting water based acrylic roof coating that is rain resistant in 30 minutes, recoatable in 2- 6 hours and applicable over virtually any roof substrate.



EXTREME WEATHER ACRYLIC COLOR is a colored, acrylic elastomeric coating that is non-volatile and provides better adhesion, durability, and reflectivity. Available in over 50 color options.



CONTRACTOR GRADE ACRYLIC WHITE is a white acrylic elastomeric coating that is non-volatile and provides solid adhesion, durability, and competitive reflectivity on nearly any roofing surface.



ROOF & TILE SEALER is a concrete and tile sealer that combines finish clarity and durability. Available in clear and 30 color options.



SILICONE (HIGH SOLIDS) is formulated for superior reflectivity, durability, UV resistance and is low VOC. Our High Solids Low VOC Silicone offers faster cure times and is not affected by ponding water. We offer both spray grade and roll grade versions.

BASE COATS



CLEAR BASE is a clear, self-priming, acrylic elastomeric coating. Clear Base is a highly adhesive coating used as a primer or base coat for fabric reinforced systems, and must be protected with a Metacrylics top coat.



GRAY BASE is a gray, acrylic elastomeric coating. Gray Base is a highly adhesive coating used as a base coat for fabric reinforced roof and deck systems. Gray Base must be protected with a Metacrylics top coat.



CONTRACTOR GRADE CLEAR & GRAY BASE is a clear or gray, self-priming, acrylic elastomeric coating to be used as a primer or base coat for fabric reinforced systems. This coating must be protected with a Metacrylics top coat.



GELS/LIQUID FLASHING



ACRYLIC GEL is an acrylic elastomeric product for thorough leak proofing or repair over any roof surface.



SILICONE GEL (HIGH SOLIDS) is a silicone formula used for thorough leak proofing or repair over any roofing surface.

PRIMERS



BLEED BLOCKER PRIMER is a clear acrylic primer formulated for asphalt based surfaces. Bleed Blocker provides resistance to asphalt staining and improves the adhesion of the coating to the roof surface.



BLACK PRIMER is a rust inhibiting, highly adhesive primer. Once cured, Black Primer has no surface tackiness and is resistant to traffic or movement of equipment.



EPDM RINSE is a low viscosity liquid used to pre-treat black EPDM roofs. EPDM Rinse increases adhesion of the Metacrylics coating to the roof membrane.



TPO PRIMER is a water-based primer designed to improve adhesion onto a wide range of TPO roofs.



ROOF & TILE PRIMER is a clear, acrylic primer. Roof & Tile Primer is surface penetrating and used with our Roof & Tile Sealer.



POLYURETHANE PRIMER is a two-component, high solids penetrating primer for re-coating existing urethane roof systems.



EPOXY PRIMER is a two component penetrating primer that offers quick curing & re-coating times.



WALKWAY YELLOW™ is an acrylic coating alternative to solid walkway products that creates walkable paths to access points and areas that require routine maintenance.

FABRIC



POLYESTER FABRICS provide the ideal strength and elongation for Metacrylics roof and deck systems over flat or irregular surfaces. Soft, medium, firm, and filament knit available.

Q COAT™

Work Faster.

Save Time & Labor on Your Coating Projects.

- Same performance in ponding conditions as our standard system. Metacrylics acrylic systems withstand ponding conditions, and ponding is not excluded from any warranty.
- Q COAT can set up and be recoated in as soon as two hours.
- No Zinc Oxide
 - Better adhesion in ponding conditions
 - Higher performance fungicides for increased mold and mildew resistance
- Rain resistant in 30 minutes!
- Systems for all roofing surfaces.
- Same Metacrylics warranties available up to 30 years.
- Apply with standard roof coating sprayers (one part), or rolled.
- Low Odor



MANUFACTURER

Metacrylics®
365 Obata Court
Gilroy, CA 95020
Office: (408) 280-7733
fax: (408) 280-6329
www.metacrylics.com

NOTICES

Metacrylics® products must be applied and installed according to written specifications from the manufacturer. Metacrylics® assume no liability for failures of this roof/deck system resulting from deviation from manufacturer's written specification, poor workmanship, or delamination of an existing underlaying roof/deck membrane. The manufacturer makes no warranty of any kind, express or implied, concerning this roof/deck system, if it is not used according to manufacturer's specifications.

SOURCES

Presented Above Are: ASTM and FTMS performed by Underwriters Laboratories, Inc., Cal Coast Laboratories, Inc., Harlan Associates, Inc., State of Calif. Dept. of Transportation (Division of Structures and Engineering Services) Office of Transportation Laboratory, Sacramento, CA; State of Calif. Air Resources Board, Sacramento, CA; State of Calif. Dept. of Health; State of Calif. Bay Area Air Pollution Control Dist.; field experience of construction contractors and California Builder & Engineer. Metacrylics® is not responsible for any changes in the above data due to discovered data or changes in the above tests

PACKAGING

2 Gallon	Pail
5 Gallon	Pail
55 Gallon	Drum
275 Gallon	Tote

DESCRIPTION WHITE, fast setting water-based elastomeric coating with built in bleed block and early rain resistance. Non-volatile, highly adhesive, UV resistant, reflective, protective coating for almost any surface.

USES For use as a reflective protective coating over BUR Asphalt, T&G, Granulated Capsheet, Rolled Roofing, Metal, Concrete, Wood, Foam, EPDM, TPO, PVC and Stucco surfaces. When applied with Metacrylics Primer, Base, and Polyester fabric, this product is recommended for all roofs and decks. Other uses include exterior and below grade waterproofing.

ZINC OXIDE Metacrylics Q COAT™ Acrylic White contains no zinc oxide. California Prop. 65 has identified zinc oxide as a hazardous material. No product manufactured by Metacrylics contains zinc oxide. This has been verified by independent testing by ICC-ES and UL Laboratories, our quality control agency.

TYPICAL PHYSICAL AND PERFORMANCE CHARACTERISTICS

SOLAR REFLECTANCE	ASTM C1549	0.89
THERMAL EMITTANCE	ASTM C1371	0.88
SRI	ASTM E1980	113
WEIGHT SOLIDS	ASTM D1644	65%
VOLUME SOLIDS	ASTM D2697	50%
VISCOSITY	ASTM D562	94 KU
TENSILE STRENGTH	ASTM D2370	275 PSI
ELONGATION	ASTM D2370	325%
TEAR RESISTANCE	ASTM D624	>100 lbf/in
PERMEANCE	ASTM D1653	22 PERMS
WATER SWELLING	ASTM D471	9.2%
PEEL ADHESION (GALVANIZED STEEL)	ASTM C794/D903	DRY 11.6 PLI / 7 DAY WATER SOAK 2.1 PLI
PEEL ADHESION (SPF)	ASTM C794/D903	DRY 7.54 PLI
LOW TEMPERATURE FLEXIBILITY	ASTM D522	PASS: 1" @ 0° F
APPEARANCE AFTER WEATHERING (1000 HRS)	ASTM D2369	NO CRACKING, CRAZING OR EROSION
VOC (G/L)	ASTM D2369	<30 G/L
FLASHPOINT		NO FLASH AT 200° F
COLOR		WHITE
DENSITY		11.7 lbs/gallon
TOXICITY		NOT FOR USE WITH POTABLE WATER
DEMULSIBILITY	AASHTOT 59	NO REACTION
PARTICLE CHARGE		NEGATIVE

CERTIFICATIONS AND ASSOCIATIONS

LEED	POINTS FOR REDUCING HEAT ISLAND
USGBC	MEMBER
CALIFORNIA TITLE 24	COMPLIANT

CHEMICAL RESISTANCE

GASOLINE	SOME SOFTENING AND SPOTTING
1 % SODIUM HYDROXIDE ALKALI	NO EFFECT
1 % HYDROXIDE ACID	NO EFFECT
SODIUM CHLORIDE FL SALT	NO EFFECT
PETROLEUM THER NAPHTHA	NO EFFECT
LUBRICATING OIL	SOME SPOTTING
DIESEL	NO EFFECT
STOCKLARD SOLVENT	NO EFFECT
BORIC ACID	NO EFFECT



Metacrylics Extreme Performance Plus is a premium reflective coating formulated with a superior acrylic resin to improve mechanical properties and withstand ponding conditions.

- **SAME PERFORMANCE IN PONDING CONDITIONS AS OUR STANDARD SYSTEM WITH POND ARMOR**
 - NO WARRANTY EXCLUSION FOR PONDING WATER
- **BUILT IN BLEED BLOCK RESISTANCE**
- **IMPROVED TOUGHNESS FOR EXCELLENT HAIL RESISTANCE**
- **IMPROVED ADHESION TO ALL ROOFING MEMBRANES**
- **BEST MECHANICAL PROPERTIES OF OUR TOP COAT OPTIONS**
 - HIGH TENSILE STRENGTH
 - ELONGATION
 - TEAR RESISTANCE
- **NO ZINC OXIDE**
 - BETTER ADHESION IN PONDING CONDITIONS
 - HIGHER PERFORMANCE FUNGICIDES FOR INCREASED MOLD AND MILDEW RESISTANCE
- **SYSTEMS FOR ALL ROOFING SURFACES.**
- **METACRYLIC'S WARRANTIES AVAILABLE UP TO 30 YEARS.**





NOTICES

Metacrylics® products must be applied and installed according to written specifications from the manufacturer. Metacrylics® assumes no liability for failures of this roof/deck system resulting from deviation from manufacturer's written specification, poor workmanship, or delamination of an existing underlying roof/deck membrane. The manufacturer makes no warranty of any kind, express or implied, concerning this roof/deck system, if it is not used according to manufacturer's specifications.

SOURCES

Presented Above Are: ASTM and FTMS performed by Underwriters Laboratories, Inc., Cal Coast Laboratories, Inc., Harlan Associates, Inc., State of Calif. Dept. of Transportation (Division of Structures and Engineering Services) Office of Transportation Laboratory, Sacramento, CA; State of Calif. Air Resources Board, Sacramento, CA; State of Calif. Dept. of Health; State of Calif. Bay Area Air Pollution Control Dist.; field experience of construction contractors and California Builder & Engineer. Metacrylics® is not responsible for any changes in the above data due to discovered data or changes in the above tests.

MANUFACTURER

Metacrylics®
 365 Obata Court
 Gilroy, CA 95020
 Office: (408) 280-7733
 fax: (408) 280-6329

SPECIFICATIONS

DESCRIPTION WHITE, water-based acrylic elastomeric coating with built in bleed block resistance. Non-volatile, highly adhesive, UV resistant, reflective, protective coating for almost any surface.

USES For use as a reflective protective coating over BUR Asphalt, T&G, Granulated Capsheet, Rolled Roofing, Metal, Concrete, Wood, Foam, EPDM, TPO, PVC and Stucco surfaces. When applied with Metacrylics Primer, Base, and Polyester fabric, this product is recommended for all roofs and decks. Other uses include exterior and below grade waterproofing.

COLOR White

ZINC OXIDE Metacrylics Extreme Performance Plus Acrylic White contains no zinc oxide. California Prop. 65 has identified zinc oxide as a hazardous material. No product manufactured by Metacrylics contains zinc oxide. This has been verified by independent testing by ICC-ES and UL Laboratories, our quality control agency.

TITLE 24 Compliant: C1371 Solar Reflectance 0.89 and C1371 Thermal Emittance 0.88.

SRI 113

LEED POINTS: Available for heat island affect.

USGBC U.S. Green Building Council member

WEATHERING 2,000 hours weatherometer - no cracking, crazing, or erosion, slight chalking. ASTM D638

FLASHPOINT No flash at 200° F (water-based). ASTM D1310, Tag Open Cup

FLEXIBILITY Low Temperature Flexibility: pass 1" :-40° F ASTM C836

TENSILE STRENGTH 325 psi ASTM D2370

ELONGATION: Initial 275% ASTM D2370. After 1000 hours ASTM D4798 weathering 175% ASTM D2370

HARDNESS Initial 275% ASTM D2370. After 1000 hours ASTM D4798 weathering 175% ASTM D2370.

PERMEANCE 22 Perms ASTM D1653

WATER SWELLING: 5.5% ASTM D624

PEEL ADHESION SPF: 8.9 average lbs/linear inch ASTM C836. Galvanized steel: 2.2 lbs/ linear inch ASTM C836.

CHEMICAL RESISTANCE

Gasoline - some softening and spotting
 1% Sodium hydroxide alkali (no effect)
 1% Hydrochloric acid (no effect)
 Sodium chloride/salt (no effect)
 Petroleum ether or naphtha (no effect)

Lubricating Oil - some spotting
 Diesel (no effect)
 Stoklard solvent (no effect)
 Boric acid (no effect)

VISCOSITY: 100 KU ASTM D562

DEMULSIBILITY: No reaction AASHTOT 59

TOXICITY: Not for use with potable water

PARTICLE CHARGE: Negative

WEIGHT: 12.1 lbs./gallon

VOC (VOLATILE ORGANIC CONTENT): 27.5 grams/liter

SOLIDS CONTENT: (by weight): 68.4% (by volume): 51%



NOTICES

Metacrylics® products must be applied and installed according to written specifications from the manufacturer. Metacrylics® assumes no liability for failures of this roof/deck system resulting from deviation from manufacturer's written specification, poor workmanship, or delamination of an existing underlying roof/deck membrane. The manufacturer makes no warranty of any kind, express or implied, concerning this roof/deck system, if it is not used according to manufacturer's specifications.

SOURCES

Presented Above Are: ASTM and FTMS performed by Underwriters Laboratories, Inc., Cal Coast Laboratories, Inc., Harlan Associates, Inc., State of Calif. Dept. of Transportation (Division of Structures and Engineering Services) Office of Transportation Laboratory, Sacramento, CA; State of Calif. Air Resources Board, Sacramento, CA; State of Calif. Dept. of Health; State of Calif. Bay Area Air Pollution Control Dist.; field experience of construction contractors and California Builder & Engineer. Metacrylics® is not responsible for any changes in the above data due to discovered data or changes in the above tests.

MANUFACTURER

Metacrylics®
365 Obata Court
Gilroy, CA 95020
Office: (408) 280-7733
fax: (408) 280-6329

SPECIFICATIONS

DESCRIPTION WHITE, water-based acrylic elastomeric coating. Non-volatile, highly adhesive, UV resistant, reflective, protective coating for almost any surface.

USES For use as a reflective protective coating over BUR Asphalt, T&G, Granulated Capsheet, Rolled Roofing, Metal, Concrete, Wood, Foam, EPDM, TPO, PVC and Stucco surfaces. When applied with Metacrylics Primer, Base, and Polyester fabric, this product is recommended for all roofs and decks. Other uses include exterior and below grade waterproofing.

COLOR White

EXTREME PERFORMANCE QUICK SET Additive that is premixed by Metacrylics into the finished product and almost immediately sets up to provide rain resistance at 40... F and 80% Relative Humidity within 2 hour or less.

ZINC OXIDE Metacrylics Acrylic White contains no zinc oxide. California Prop. 65 has identified zinc oxide as a hazardous material. No product manufactured by Metacrylics contains zinc oxide. This has been verified by independent testing by ICC-ES and UL Laboratories, our quality control agency.

TITLE 24 Compliant. Cool Roof Rating Council testing: C-1371 Solar Reflectance 0.87 and C-1371 Thermal Emittance 0.90. CRRC Seller ID No: 0660.

SRI 111

LEED POINTS: Available for heat island affect.

USGBC U.S. Green Building Council member

ICC-ES ICC-Evaluation Services, Inc. listed Report No. 4785 complying with U.S. Building Codes.

UL Classified Quality Control Agency and Class A Fire and Wind Uplift rated.

WEATHERING 2,000 hours weatherometer - no cracking, crazing, or erosion, slight chalking. ASTM D638

TEMPERATURE CYCLING AND PENETRATION Tests conducted in accordance with the "Acceptance Criteria For Special Roofing Systems" as published by the International Conference of Building Officials (ICBO). Results: PASS. Samples averaged 1.626 before testing. Samples averaged 1.610 after being subjected to the Weatherometer. The change in thickness was less than 1%. Examination of the samples after testing showed no evidence of tearing or cracking of the protective coating. *Temperature Cycling and Penetration Testing: 25 continuous cycles of 1 hour of water exposure at room temperature prior to 6 hours at -40... F, 2 hours at 70... F, 14 hours at 180... F and 1 hour at 70... F. Spray nozzles delivered 6 in. of water per hour at a temperature of 40... F to 60... F. At the conclusion of the 25 cycles the specimens were examined.

FLASHPOINT No flash at 200° F (water-based). ASTM 1310, Tag Open Cup

FLEXIBILITY Low Temperature Flexibility: pass 1" :-40° F ASTM C836

TENSILE STRENGTH *Includes Metacrylics Stitchbonded polyester fabric (10 mils) Strength: 156 psi (81 mils*) Strength at break 1,914 psi 74... F ASTM D412 (10 mils) Elongation: 149% ave(81 mils*) Strength at break 3,540 psi , 0... F ASTM D412

ELONGATION: 149% ave(81 mils*) Strength at break 3,540 PSI, 0... F ASTM D412

HARDNESS Shore A 41 ASTM D-676 (8 days cure + 4 hours 120° F)

PERMEABILITY 0.016 Perms ASTM D1653 (81 mils dry film thickness) (Water Vapor Transmission)

PEEL ADHESION Concrete: 6.3 average lbs./linear inch ASTM C836



Metacrylics Walking Deck Application

Metacrylics is the perfect solution for exterior walking decks. Combining performance and aesthetics, Metacrylics enhances the look of any walkway or deck while also providing a durable walking surface that protects the deck surface from water absorption and UV damage. Metacrylics coatings provide a decorative, walkable finish with excellent long-term color retention.

Metacrylics Walking Deck

Holds color and remains durable in high traffic areas

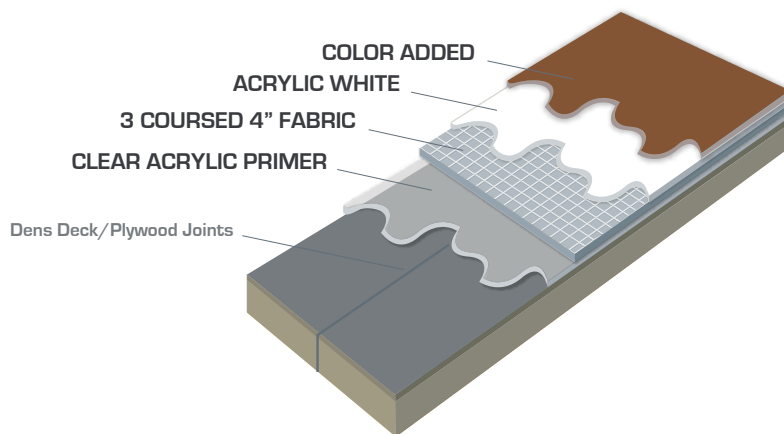
Easy Installation

Over 30 Colors Available

Zinc Oxide Free Formulation

Waterproofs exterior surfaces

Remains flexible



Visit Metacrylics.com to view full color chart



365 Obata Court
Gilroy, CA 95020

Tel 800 660-6950
www.metacrylics.com

Roof Coating Innovation Since 1976

For more than 40 years, Metacrylics® has set the standard for energy efficient coatings by combining innovative formulations with the industry's most comprehensive project support. Metacrylics® develops and supplies sustainable solutions with the highest level of performance, utilizing the finest ingredients available and never sacrificing quality.

As of 2017 Metacrylics is an IPS Roofing Products Company.



NOTICES

Metacrylics® products must be applied and installed according to written specifications from the manufacturer. Metacrylics® assumes no liability for failures of this roof/deck system resulting from deviation from manufacturer's written specification, poor workmanship, or delamination of an existing underlying roof/deck membrane. The manufacturer makes no warranty of any kind, express or implied, concerning this roof/deck system, if it is not used according to manufacturer's specifications.

SOURCES

Presented Above Are: ASTM and FTMS performed by Underwriters Laboratories, Inc., Cal Coast Laboratories, Inc., Harlan Associates, Inc., State of Calif. Dept. of Transportation (Division of Structures and Engineering Services) Office of Transportation Laboratory, Sacramento, CA; State of Calif. Air Resources Board, Sacramento, CA; State of Calif. Dept. of Health; State of Calif. Bay Area Air Pollution Control Dist.; field experience of construction contractors and California Builder & Engineer. Metacrylics® is not responsible for any changes in the above data due to discovered data or changes in the above tests.

MANUFACTURER

Metacrylics®
 365 Obata Court
 Gilroy, CA 95020
 Office: (408) 280-7733
 fax: (408) 280-6329

Metacrylics Roof & Tile Sealer

Construction / Technical Data Sheet

DESCRIPTION

Metacrylics Acrylic Roof & Tile Sealer is a water-based coating that combines the gloss, clarity and weathering characteristics found in acrylics with the toughness and durability of epoxies. Metacrylics Roof & Tile Sealer may be used as a seal or topcoat for indoor and outdoor roof and tile surfaces, e.g., Metacrylics or other acrylic coatings, natural stone, terrazzo, metal, concrete, slate, clay and tile roofing surfaces. The built-in resistance to ponding water and oils make it the right product for roofs, decks, warehouses, concrete garages, etc. Clear Acrylic Roof & Tile Sealer exceeds the Coefficient of Friction Safety Standard ASTM Designation D-2047. It also complies with VOC anti-smog ordinances.

Color

CLEAR or 36 COLORS

Features

Metacrylics® Roof & Tile Sealer is an all-acrylic latex dispersion that is suitable as a binder for EIFS basecoats and topcoats. Topcoat finishes protected with Metacrylics Roof Tile Sealer show good water resistance, easy workability, and increased resistance to dirt pick-up, freeze-thaw resistance, excellent color retention and weather-ability. Films obtained from it are tough, flexible, tack-free at room temperature and very resistant to water absorption. Since base-coat stability can vary based on the type of cement and conditions of use, dispersing aids may be needed to attain desired workability.

PROPERTIES

Product Specifications*

Color	White, Stable Emulsion, Dries Clear
pH	7.9(±0.2)
Specific Gravity	1.03
Volume by Weight	8.3lbs/gal
V.O.C. Content	<3%
Refractometer Solids	22.5%(±0.2%)
Flash Point	None (C.O.C. Method)
Gloss	90 (ASTM Test D-523, 60°)
Safety	Exceeds Slip Resistant Reqs. (ASTM Test D-2047)
Leveling	Excellent (ASTM Test D-2801)
Re-coatability	Excellent (ASTM Test D-3153-78)
Drying Time	At 68°F and 50% relative humidity: Set to touch in 30 minutes. Re-coat in 1-2 hours. Ready for light traffic in 4-8 hours. Vehicle/heavy traffic 12-24 hours after final coat. Do not apply if rain or moisture are forecasted within 24 hours of application.

Package sizes

1 gallon, 5 gallon, and 55 gallon drum

* These figures should be taken for comparison purposes only. All that can be obtained from it is an idea of the order of magnitude.

APPLICATION

Preparation

Surface must be thoroughly cleaned and rinsed; always use TSP for fast efficient removal of dirt and oils. Pressure wash old roofs or decks prior to application. Always test non-Metacrylics surfaces in an inconspicuous area prior to use.



Roof & Tile Sealer

Easy Installation

Over 30 Colors Available

Zinc Oxide Free Formulation

Penetrating Primer Strengthens the Integrity of the Roof Tile

Fungicide to Resist Mold and Mildew Buildup

Prolongs the Life of the Roof System

Avoid Costly Tear Off and Replacements



Metacrylics Complete Roof Tile Restoration

Visit Metacrylics.com to view full color chart



365 Obata Court
Gilroy, CA 95020

Tel 800 660-6950
www.metacrylics.com

Roof Coating Innovation Since 1976

For more than 40 years, Metacrylics® has set the standard for energy efficient coatings by combining innovative formulations with the industry's most comprehensive project support. Metacrylics® develops and supplies sustainable solutions with the highest level of performance, utilizing the finest ingredients available and never sacrificing quality.

As of 2017 Metacrylics is an IPS Roofing Products Company.



METACRYLICS ACRYLIC GEL

Metacrylics Acrylic Gel is an elastomeric, liquid-applied flashing that permanently stops leaks over seams, scuppers, drains, wood blocks, wood sleepers, HVAC supports, HVAC Ducting joints, skylights, pitch pockets, parapet coping, gutters, vents, edge flashing, gravel stops, and other common leak areas.

Due to its excellent adhesion, Metacrylics Gel can be used over nearly any roofing surface including BUR Asphalt, Tar & Gravel, Granulated Capsheet, Metal, Concrete, Wood, Foam, EPDM, TPO, PVC, Stucco and previously coated surfaces.

Metacrylics Acrylic Gel can be used as part of a complete Metacrylics cool roof restoration system or as a maintenance or spot repair flashing solution over existing roofing surfaces.

METACRYLICS SILICONE GEL

Metacrylics Silicone Gel is a high solids silicone liquid-applied flashing that permanently stops leaks over common leak areas. Metacrylics Silicone Gel can be used as part of a complete Metacrylics Silicone roof restoration system or as a maintenance or spot repair flashing solution over existing roofing surfaces.

Metacrylics Silicone Gel can be used over nearly any roofing surface including modified bitumen, built-up roofing, metal, polyurethane foam, wood, concrete and a variety of single-ply systems. Its fast curing time helps the applicator save time.

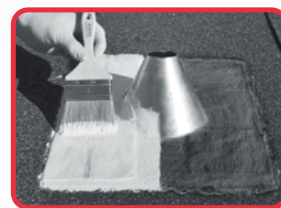
MANUFACTURER INFO

Metacrylics
365 Obata Court
Gilroy, CA 95020
Office: (408) 280-7733
fax: (408) 280-6329
metacrylics.com

PERMANENT LEAK REPAIR — FOR ANY ROOF SURFACE —



(1Gal, 2Gal, 3.5Gal, 5Gal)



Available in **WHITE, GREY, or CLEAR**

ADHERES TO ALL SURFACES

METACRYLICS GEL PROVIDES STRONG ADHESION AND UV RESISTANCE FOR A DURABLE SEAL

EASY APPLICATION

METACRYLICS GEL CAN BE USED ON VIRTUALLY ANY ROOF SURFACE AND CAN BE BRUSHED, ROLLED, OR TROWELED.

NO ZINC OXIDE

LIKE ALL METACRYLICS PRODUCTS, METACRYLICS GEL IS FORMULATED WITH HIGH QUALITY RESINS AND WITHOUT ZINC OXIDE, ALLOWING FOR BETTER ADHESION, REDUCED CHALKING AND BREAKDOWN, AND ADDED FUNGICIDES





Pond Armor

NOTICES

Metacrylics® products must be applied and installed according to written specifications from the manufacturer. Metacrylics® assumes no liability for failures of this roof/deck system resulting from deviation from manufacturer's written specification, poor workmanship, or delamination of an existing underlying roof/deck membrane. The manufacturer makes no warranty of any kind, express or implied, concerning this roof/deck system, if it is not used according to manufacturer's specifications.

SOURCES

Presented Above Are: ASTM and FTMS performed by Underwriters Laboratories, Inc., Cal Coast Laboratories, Inc., Harlan Associates, Inc., State of Calif. Dept. of Transportation (Division of Structures and Engineering Services) Office of Transportation Laboratory, Sacramento, CA; State of Calif. Air Resources Board, Sacramento, CA; State of Calif. Dept. of Health; State of Calif. Bay Area Air Pollution Control Dist.; field experience of construction contractors and California Builder & Engineer. Metacrylics® is not responsible for any changes in the above data due to discovered data or changes in the above tests.

MANUFACTURER

Metacrylics®
 365 Obatta Court
 Gilroy, CA 95020
 Office: (408) 280-7733
 fax: (408) 280-6329

SPECIFICATIONS

DESCRIPTION Water-based acrylic elastomeric mastic for flashing and fabric reinforcement repairs. Non-volatile, highly adhesive, UV resistant, extremely reflective, resistant to thermal shock and moisture.

USES Use to repair roof blisters, field seams, drains, scuppers, copping, splits, cracks, fishmouths, perimeter base & curb flashings over wood, metal, concrete, urethane, epoxies, rubber, single-ply, BUR asphalt, emulsion, and other surfaces. A highly elastic, adhesive, flexible waterproofing caulking, especially when used with the Stitch-bond Polyester Fabric reinforcement. Also, used to waterproof and seal all roof penetration details for Metacrylics roof restoration solutions.

COLOR White, Gray, and Clear

ZINC OXIDE: Metacrylics Acrylic GEL contains no zinc oxide. California Prop. 65 has identified zinc oxide as a hazardous material. No product manufactured by Metacrylics contains zinc oxide. This has been verified by independent testing by Aquifer Sciences, Inc.

TITLE 24: Compliant. Cool Roof Rating Council testing: C-1371 Solar Reflectance 0.87 and C-1371 Thermal Emittance 0.90. CRRC Seller ID No: 0660.

LEED POINTS: Available for heat island affect.

USGBC: U.S. Green Building Council member

ICC-ES: ICC-Evaluation Services, Inc. listed Report No. 4785 complying with U.S. Building Codes.

UL Classified: Quality Control Agency and Class A Fire and Wind Uplift rated.

WEATHERING: 2,000 hours weatherometer - no cracking, crazing, or erosion, slight chalking. ASTM D638

TEMPERATURE CYCLING AND PENETRATION: Tests conducted in accordance with the "Acceptance Criteria for Special Roofing Systems" as published by the International Conference of Building Officials (ICC-ES). Results: PASS. Samples averaged 1.626 before testing. Samples averaged 1.610 after being subjected to the Weatherometer. The change in thickness was less than 1%. Examination of the samples after testing showed no evidence of tearing or cracking of the protective coating.

*Temperature Cycling and Penetration Testing: 25 continuous cycles of 1 hour of water exposure at room temperature prior to 6 hours at -40° F, 2 hours at 70° F, 14 hours at 180° F and 1 hour at 70° F. Spray nozzles delivered 6 in. of water per hour at a temperature of 40° F to 60° F. At the conclusion of the 25 cycles the specimens were examined.

FLASHPOINT No flash at 200° F (water-based). ASTM 1310, Tag Open Cup

FLEXIBILITY Low Temperature Flexibility: pass 1" :-40° F ASTM C836

TENSILE STRENGTH *Includes Metacrylics Stitchbonded polyester fabric (10 mils)

STRENGTH: 156 PSI (81 mils*) Strength at break 1,914 PSI 74o F ASTM D412 (10 mils)

ELONGATION: 149% ave(81 mils*) Strength at break 3,540 PSI, 0o F ASTM D412

HARDNESS Shore A 41 ASTM D-676 (8 days cure + 4 hours 120° F)

PERMEABILITY 0.01 milligrams water loss. Payne Permeability cups.

PEEL ADHESION Concrete: 6.3 average lbs./linear inch ASTM C836

PERMEABILITY: 0.016 Perms ASTM D1653 (81 mils dry film thickness) (Water Vapor Transmission)



NOTICES

Metacrylics® products must be applied and installed according to written specifications from the manufacturer. Metacrylics® assumes no liability for failures of this roof/deck system resulting from deviation from manufacturer's written specification, poor workmanship, or delamination of an existing underlying roof/deck membrane. The manufacturer makes no warranty of any kind, express or implied, concerning this roof/deck system, if it is not used according to manufacturer's specifications.

SOURCES

Presented Above Are: ASTM and FTMS performed by Underwriters Laboratories, Inc., Cal Coast Laboratories, Inc., Harlan Associates, Inc., State of Calif. Dept. of Transportation (Division of Structures and Engineering Services) Office of Transportation Laboratory, Sacramento, CA; State of Calif. Air Resources Board, Sacramento, CA; State of Calif. Dept. of Health; State of Calif. Bay Area Air Pollution Control Dist.; field experience of construction contractors and California Builder & Engineer. Metacrylics® is not responsible for any changes in the above data due to discovered data or changes in the above tests.

MANUFACTURER

Metacrylics®
 365 Obata Court
 Gilroy, CA 95020
 Office: (408) 280-7733
 fax: (408) 280-6329

SPECIFICATIONS

DESCRIPTION AND RECOMMENDED USES: Metacrylics Silicone GEL is an extremely versatile, tough, yet flexible flashing membrane that is easily brush or trowel applied at thicknesses up to 1/4". Metacrylics Silicone GEL can be used over a variety of roofing substrates including direct-to-metal (DTM), spray polyurethane foam, smooth built up, smooth modified, granulated modified, concrete, a variety of single-ply systems, flashings, fasteners, field seam, scuppers, and drains. It is designed to create a watertight liquid flashing for problematic roofing detail repairs.

FEATURES & BENEFITS This highly reflective and UV resistant membrane has excellent adhesion, vertical hang capabilities and performs exceptionally under ponding water conditions. Metacrylics Silicone GEL can be used as part of a complete cool roof restoration system and/or used for repairs of existing systems, roof repairs such as flashings, penetrations, seams, HVAC ducting, fasteners, scuppers and drains. This single component, Low VOC, moisture cured liquid flashing membrane is also environmentally friendly.

TYPICAL USES

- Can be used for spot repairs
- Reinforce seams, flashings and penetrations
- Seal joint and penetration repairs for solar systems and air conditioning systems

GENERAL PROPERTIES High Solids 94% (±2) percent by volume ASTM D-2697-3

STANDARD COLORS White

PHYSICAL PROPERTIES Material tested complies with all the requirements of ASTM D- 6694-01 Standard Specification Liquid-Applied Silicone Coating used in Spray Polyurethane Foam Roofing.

PACKAGING	2 & 3.5 gallon buckets
COVERAGE RATE	25 sq ft / gal
COLOR	White
SHELF LIFE	1 year (unopened)
TACK FREE, (75°F, 50% RH)	>3 Hrs
CURE TIME (75°F, 50% RH)	24 Hrs
DUOMETER HARDNESS: SHORE A	45-55
WEATHERING QUV 5,000 HRS.	No Degradation
PERMEABILITY (U.S. PERMS)	7.9
TEAR STRENGTH	45lbs/in
SOLIDS BY VOLUME, ASTM D-2697	94%-(± 2)
SOLIDS BY WEIGHT, ASTM D-2697	94%-(± 2)
FLASH POINT, ASTM D-56	142°F
VISCOSITY	50,000 cps
TENSILE STRENGTH (DIE C, ASTM D-412)	300 psi
ELONGATION, ASTM D-412	200%

DIRECTIONS FOR USE

Review all technical data sheets, system sheets, labels, instructions, SDS, and Guide Specifications before applying. Cure time will vary based on temperature and atmospheric conditions.

APPLICATION: Prior to coating any surface, be sure the coating will adhere by performing an adhesion test (ASTM D-903). Coating may be applied by brush, spatula or trowel. Do not apply when temperatures are below 40°F (4.4°C) or when precipitation is in the forecast within 2 hours.

LIMITATIONS: To avoid pin holes and blistering Metacrylics Silicone GEL should not be applied at a rate no thicker than 250 wet mils (6350 µ) in one application.



NOTICES

Metacrylics® products must be applied and installed according to written specifications from the manufacturer. Metacrylics® assumes no liability for failures of this roof/deck system resulting from deviation from manufacturer's written specification, poor workmanship, or delamination of an existing underlying roof/deck membrane. The manufacturer makes no warranty of any kind, express or implied, concerning this roof/deck system, if it is not used according to manufacturer's specifications.

SOURCES

Presented Above Are: ASTM and FTMS performed by Underwriters Laboratories, Inc., Cal Coast Laboratories, Inc., Harlan Associates, Inc., State of Calif. Dept. of Transportation (Division of Structures and Engineering Services) Office of Transportation Laboratory, Sacramento, CA; State of Calif. Air Resources Board, Sacramento, CA; State of Calif. Dept. of Health; State of Calif. Bay Area Air Pollution Control Dist.; field experience of construction contractors and California Builder & Engineer. Metacrylics® is not responsible for any changes in the above data due to discovered data or changes in the above tests.

MANUFACTURER

Metacrylics®
 365 Obata Court
 Gilroy, CA 95020
 Office: (408) 280-7733
 fax: (408) 280-6329

Metacrylics® High Solids SILICONE

Single Component High Solids Silicone Cool Roof Top-Base Coat

Technical Data Sheet

SPECIFICATIONS

DESCRIPTION a single-component silicone coating specifically designed with high volume solids. Metacrylics High Solids Silicone is available in a Roll Grade for use with rollers and brushes and a Spray Grade for use with spraying equipment.

GENERAL PROPERTIES High Solids, 100% silicone content, rapid cure

RECOMMENDED USES Can be applied as a part of a maintenance or repair program or as part of a complete roof restoration system. Can be used to reinforce and seal field seams, roof penetrations, drains, scuppers, flashings, membrane splits and cracks as well as spot repairs for general roofing maintenance. The roof surfaces that can be applied over are limitless; BUR Modified Bitumen (Granulated or Smooth), Torch-down, Metal, TPO, EPDM, PVC, Foam, Tar & Gravel and Concrete.

PRODUCT LIMITATIONS Not recommended for continuous immersion service, for use in cryogenic tank, or cold storage roofing applications without a vapor barrier, or directly over modified Bitumen, asphalt or coal tar built-up roofing systems without an appropriate primer.

PONDING WATER The Metacrylics® High Solids Silicone Roof Membrane is not affected by ponding water, however, The National Roofing Contractors Association considers ponding water on any roof undesirable and recommends that all roof systems be designed and built to ensure positive drainage. (See the NRCA Roofing and Waterproofing Manual). Please consult Metacrylics® Technical Department for any specific questions regarding the application of this product.

STANDARD COLORS White, Light Grey, and Tan. Special colors are available upon request at additional charge and with minimum order quantity requirement limits. *Allow additional 15 days for non-standard colors.

	ROLL GRADE	SPRAY GRADE
PACKAGING	5 gal pail	50 gal drum, 250 gal tote
COLOR	White, Custom Colors	White, Custom Colors
SHELF LIFE	6 months (unopened)	6 months (unopened)
ELONGATION, ASTM D-12	200% (±15)	230% (±15)
TENSILE STRENGTH (DIE C)	300 psi (±25)	240 psi (±25)
DUOMETER HARDNESS: SHORE A	45-55	35-45
PERMEABILITY (U.S. PERMS)	2.0	10.7
SOLIDS BY VOLUME	98%	92% (±3%)
SOLIDS BY WEIGHT	98%	92% (±3%)
VISCOSITY	8,000 - 11,000 cps	5,000-8,000 cps
SPECIFIC GRAVITY	1.20	1.24
FLASH POINT	280°F	141°F
VOC'S	<50g/L	<50g/L
REFLECTIVITY	88%	89%
EMISSION	91%	90%
SRI	110	113

DISCLAIMER: All guidelines, recommendations, statements, and technical data contained herein are based on information and tests we believe to be reliable and correct, but accuracy and completeness of said tests are not guaranteed and are not to be construed as a warranty, either expressed or implied. It is the user's responsibility to satisfy himself, by his own information and tests, to determine suitability of the product for his own intended use, application and job situation and user assumes all risk and liability resulting from his use of the product. We do not suggest or guarantee that any hazards listed herein are the only ones that may exist. Neither seller nor manufacturer shall be liable to the buyer or any third person for any injury, loss or damage directly or indirectly resulting from use of, or inability to use, the product. Recommendations or statements, whether verbal or in writing, other than those contained herein shall not be binding upon the manufacturer, unless in writing and signed by a corporate officer of the manufacturer. Technical and application information is provided for the purpose of establishing a general profile of the material and proper application procedures. Test performance results were obtained in a controlled environment and Metacrylics makes no claim that these tests or any other tests, accurately represent all environments.



ITEM #241050

Coating available in 5 gallon pails (Including sand)



WalkwayYellow™

ACRYLIC COATING SYSTEM



ALTERNATIVE TO SOLID WALKWAY PRODUCTS

- Creates walkable paths to access points and areas that require routine maintenance
- Prevents damage to coated areas of the roof
- Clearly identifies roof edges, rooftop equipment, drains, and other areas to avoid
- Meets ANSI A137.1 dynamic coefficient of friction test for international building code
- Easy to install; Can be brushed, or rolled
- Already included granules for ease of installation
- Durable coating will not prematurely fade or wash off
- Included in full roof acrylic system warranties up to 30 years



IPS
ROOFING PRODUCTS™

Product Thickness Guide

METACRYLICS PRODUCT THICKNESS GUIDE			
Top Coat Products	Classification	Wet mil thickness @ 1/gal/sq	Dry mil thickness @ 1gal/sq
Extreme performance acrylic white	Top coat	16.0	7.7
Extreme weather acrylic white	Top coat	16.0	8.7
Extreme weather acrylic white quickset	Top coat	16.0	8.7
Contractor grade acrylic white	Top coat	16.0	6.2
High solids silicone	Top coat	16.0	15.5
Acrylic color	Specialty top coat	16.0	7.3
Roof and tile sealer (clear)	Specialty top coat	16.0	4.6
Roof and tile sealer (color)	Specialty top coat	16.0	4.9
Base Coat Products	Classification	Wet mil thickness @ 1/gal/sq	Dry mil thickness @ 1gal/sq
Gray base	Base coat	16.0	8.4
Clear base	Base coat	16.0	5.6
Primer Products	Classification	Wet mil thickness @ 1/gal/sq	Dry mil thickness @ 1gal/sq
Roof and tile primer	Primer	16.0	3.0
Bleed blocker primer	Primer	16.0	3.0
TPO primer	Primer	16.0	3.0
EPDM rinse	Primer	16.0	NA
Polyurethane primer	Primer	16.0	3.0
Epoxy primer	Primer	16.0	3.0
Black primer	Primer	16.0	3.0
Gel/Mastic Products	Classification	Wet mil thickness @ 1/gal/sq	Dry mil thickness @ 1gal/sq
Acrylic gel (all colors)	Gel/ mastic	16.0	9.3
Acrylic gel (clear)	Gel/ mastic	16.0	6.7
Silicone gel	Gel/ mastic	16.0	13.9
Fabric Product	Classification	Wet mil thickness @ 1/gal/sq	Dry mil thickness @ 1gal/sq
Polyester fabric	Fabric	7.0	7.0



SYSTEM INSTALLATION CHARTS & ITEM NUMBERS

365 OBATA COURT, GILROY, CA 95020
PHONE: (408) 280 -7733 | FAX: (408) 280-6329
METACRYLICS.COM

IPS
ROOFING PRODUCTS

Acrylic Coating over EPDM Roof

WARRANTY*		MATERIALS REQUIRED FOR 100 FT ² (1 ROOFING SQUARE)					
Type	Length	EPDM Rinse	Clear Base	Acrylic Top Coat	Polyester Fabric	Penetrations	3-Course All Overlaps w/ 9" Fabric
Material	5-Year	0.2 gal.	1 gal.	2 gal.	—	Acrylic Gel As Needed	—
Material	10-Year	0.2 gal.	1 gal.	3 gal.	Ponded Areas	3-Course	As Needed
NDL	15-Year	0.2 gal.	3 gal.	3.5 gal.	1-Ply (Full)	3-Course	As Needed
NDL	20-Year	0.2 gal.	4 gal.	4 gal.	1-Ply (Full)	3-Course	As Needed
NDL	30-Year	0.2 gal.	6 gal.	7 gal.	2-Ply (Full)	5-Course	As Needed

Silicone Coating over EPDM Roof

WARRANTY*		MATERIALS REQUIRED FOR 100 FT ² (1 ROOFING SQUARE)		
Type	Length	EPDM Rinse	Clear Base	High Solids Silicone
NDL	10-Year	0.2 gal.	0.5 gal.	2 gal.
NDL	15-Year	0.2 gal.	0.5 gal.	2.5 gal.
NDL	20-Year	0.2 gal.	0.5 gal.	3 gal.

**Always consult your Metacrylics® rep or contact Metacrylics for full system specifications.*

Acrylic Application Over EPDM

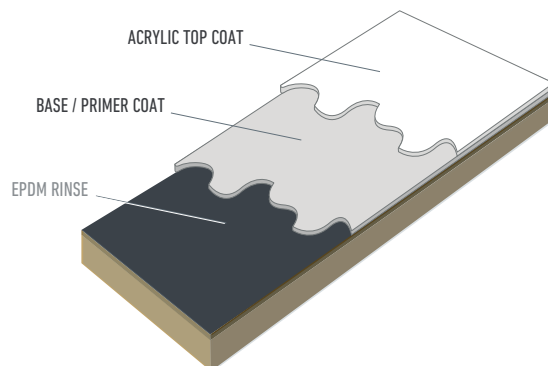


Diagram shows application for material 5 and 10 year warranties. Fabric application is not displayed.

Acrylic Coating over TPO or PVC

WARRANTY*		MATERIALS REQUIRED FOR 100 FT ² (1 ROOFING SQUARE)					
Type	Length	TPO Primer	Clear Base	Acrylic Top Coat	Polyester Fabric	Penetrations	3-Course All TPO Overlaps w/ 9" Fabric
Material	5-Year	0.3 gal.	—	2 gal.	—	Acrylic Gel As Needed	As Needed
Material	10-Year	0.3 gal.	—	3 gal.	Ponding Areas	3-Course	As Needed
NDL	15-Year	0.3 gal.	3 gal.	3.5 gal.	1-Ply (Full)	3-Course	As Needed
NDL	20-Year	0.3 gal.	4 gal.	4 gal.	1-Ply (Full)	3-Course	As Needed
NDL	30-Year	0.3 gal.	6 gal.	7 gal.	2-Ply (Full)	5-Course	As Needed

Silicone Coating over TPO or PVC

WARRANTY*		MATERIALS REQUIRED FOR 100 FT ² (1 ROOFING SQUARE)	
Type	Length	TPO Primer, Urethane Primer OR Roof & Tile Primer	High Solids Silicone
NDL	10-Year	0.5 gal.	2 gal.
NDL	15-Year	0.5 gal.	2.5 gal.
NDL	20-Year	0.5 gal.	3 gal.

**Always consult your Metacrylics® rep or contact Metacrylics for full system specifications.*

Acrylic Application Over TPO

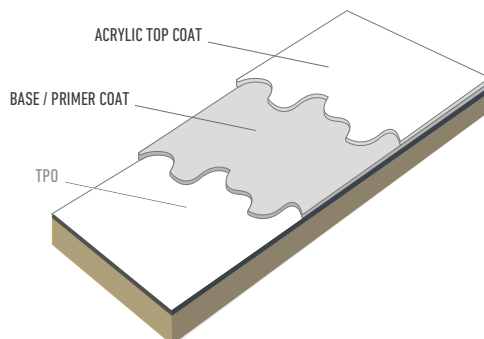


Diagram shows application for material 5 and 10 year warranties. Fabric application is not displayed.



Acrylic Coating over Smooth Surface BUR/Modified Capsheet

WARRANTY*		MATERIALS REQUIRED FOR 100 FT ² (1 ROOFING SQUARE)				
Type	Length	Clear Base	Acrylic Top Coat	Polyester Fabric	Penetrations	3-Course All Capsheet Overlaps w/ 6" Fabric
Material	5-Year	1 gal.	2 gal.	–	Acrylic Gel As Needed	–
Material	10-Year	1 gal.	3 gal.	Ponding Areas	3-Course	As Needed
NDL	15-Year	3 gal.	3.5 gal.	1-Ply (Full)	3-Course	As Needed
NDL	20-Year	4 gal.	4 gal.	1-Ply (Full)	3-Course	As Needed
NDL	30-Year	6 gal.	7 gal.	2-Ply (Full)	5-Course	As Needed

Silicone Coating over Smooth Surface BUR/Modified Capsheet

WARRANTY*		MATERIALS REQUIRED FOR 100 FT ² (1 ROOFING SQUARE)	
Type	Length	Bleed Block Primer	High Solids Silicone
NDL	10-Year	1 gal.	2 gal.
NDL	15-Year	1 gal.	2.5 gal.
NDL	20-Year	1 gal.	3 gal.

**Always consult your Metacrylics® rep or contact Metacrylics for full system specifications.*

Acrylic Coating over Spray Polyurethane Foam

WARRANTY*		MATERIALS REQUIRED FOR 100 FT ² (1 ROOFING SQUARE)			
Type	Length	Clear Base	Acrylic Top Coat	Polyester Fabric	Penetrations
Material	5-Year	1 gal.	3 gal.	—	Acrylic Gel As Needed
Material	10-Year	3 gal.	3 gal.	Ponding Areas	3-Course
NDL	15-Year	5 gal.	4 gal.	1-Ply (Full)	3-Course
NDL	20-Year	5 gal.	6 gal.	1-Ply (Full)	3-Course
NDL	30-Year	7.5 gal.	8 gal.	2-Ply (Full)	5-Course

Silicone Coating over Spray Polyurethane Foam

WARRANTY*		MATERIALS REQUIRED FOR 100 FT ² (1 ROOFING SQUARE)		
Type	Length	Primer Required?	Clear Base	High Solids Silicone
NDL	10-Year	No	1 gal.	2 gal.
NDL	15-Year	No	1 gal.	2.5 gal.
NDL	20-Year	No	1 gal.	3 gal.

**Always consult your Metacrylics® rep or contact Metacrylics for full system specifications.*

Acrylic Application Over Polyurethane Foam

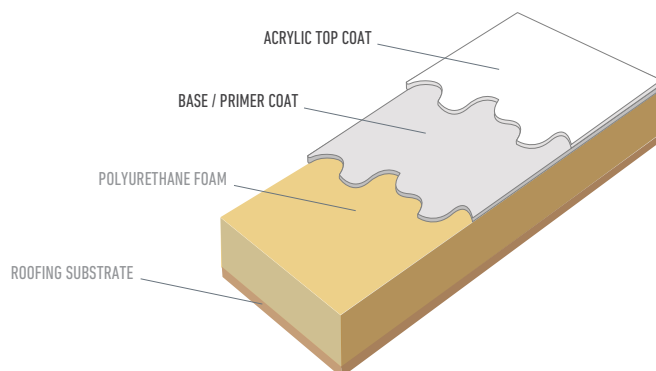


Diagram shows application for material 5 and 10 year warranties. Fabric application is not displayed.

Acrylic Coating over Metal

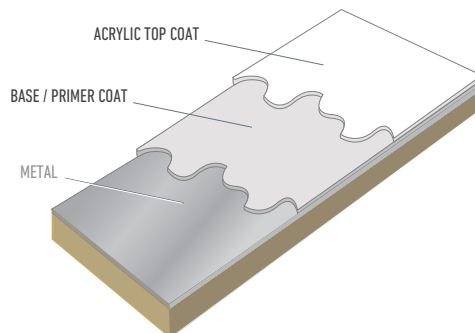
WARRANTY*		MATERIALS REQUIRED FOR 100 FT ² (1 ROOFING SQUARE)			
Type	Length	Black Primer Or Clear Base	Acrylic Top Coat	Penetrations	3 or 5 Course Overlaps with 4"/6" Fabric
Material	5-Year	1 gal.	1.5 gal.	Acrylic Gel As Needed	—
Material	10-Year	1 gal.	2 gal.	3-Course	As Needed
NDL	15-Year	1 gal.	3 gal.	3-Course	As Needed
NDL	20-Year	1 gal.	4 gal.	3-Course	As Needed
NDL	30-Year	1gal.	6 gal.	5-Course	As Needed

**Always consult your Metacrylics® rep or contact Metacrylics for full system specifications.*

Silicone Coating over Metal

WARRANTY*		MATERIALS REQUIRED FOR 100 FT ² (1 ROOFING SQUARE)	
Type	Length	Roof & Tile Primer or Black Primer (For Rust)	High Solids Silicone
NDL	10-Year	1 gal.	2 gal.
NDL	15-Year	1 gal.	2.5 gal.
NDL	20-Year	1 gal.	3 gal.

Acrylic Application Over Metal



Epoxy primer can be used if adhesion tests failed for Roof & Tile Primer or Black Primer

Diagram shows application for material 5 and 10 year warranties. Fabric application is not displayed.



Acrylic Coating over New Construction Plywood

WARRANTY*		MATERIALS REQUIRED FOR 100 FT ² (1 ROOFING SQUARE)					
Type	Length	Clear Base	Acrylic Top Coat	Georgian* Pacific DensDeck®	Atlas* FR-10 Slipsheet	Polyester Fabric	Penetrations
Installation With 1/4 inch DensDeck® Minimum							
NDL	15-Year	4 gal.	3 gal.	1/4 inch DensDeck®	—	1-Ply (Full)	3-Course
NDL	20-Year	4 gal.	4 gal.	1/4 inch DensDeck®	—	1-Ply (Full)	3-Course
NDL	30-Year	6 gal.	7 gal.	1/4 inch DensDeck®	—	2-Ply (Full)	5-Course
Installation With 2-Ply Atlas FR-10 Slipsheets							
NDL	15-Year	7 gal.	3 gal.	—	2-Ply	1-Ply (Full)	3-Course
NDL	20-Year	7 gal.	4 gal.	—	2-Ply	1-Ply (Full)	3-Course
NDL	30-Year	9 gal.	7 gal.	—	2-Ply	1-Ply (Full)	5-Course

**Not sold or warrantied by Metacrylics*

Re-Coat Existing Metacrylics® Roof

WARRANTY*		MATERIALS REQUIRED FOR 100 FT ² (1 ROOFING SQUARE)			
Type	Length	Clear Base	Acrylic Top Coat	Polyester Fabric	Penetrations
Material	5-Year	0.5 gal.	2 gal.	—	Acrylic Gel As Needed
Material	10-Year	0.5 gal.	3 gal.	—	Acrylic Gel As Needed
Material	15-Year	0.5 gal.	4 gal.	—	3-Course
Material	20-Year	0.5 gal.	5 gal.	—	3-Course
Material	30-Year	0.5 gal.	7 gal.	—	3-Course

**Always consult your Metacrylics® rep or contact Metacrylics for full system specifications.*



Acrylic Walking Deck over New Construction Plywood

WARRANTY*		MATERIALS REQUIRED FOR 100 FT² (1 ROOFING SQUARE)								
Type	Length	Gray Base	Clear Base	Acrylic Color/ White	Georgian* Pacific DensDeck®	Atlas* FR-10 Slipsheet	Polyester Fabric	Penetrations	Roof & Tile Sealer	Granules
Class A Fire Rating Using 1/4 inch DensDeck®										
Material	10-Year	4 gal.	—	4 gal.	1/4 inch minimum	—	1-Ply (Full)	3-Course	.25 gal.	As Needed
Material	15-Year	4 gal.	—	6 gal.	1/4 inch minimum	—	1-Ply (Full)	3-Course	.25 gal.	As Needed
NDL	20-Year	4 gal.	—	8 gal.	1/4 inch minimum	—	1-Ply (Full)	3-Course	.25 gal.	As Needed
Class A Fire Rating Using 2-Plies Atlas FR-10 Slipsheets										
Material	10-Year	4 gal.	3 gal.	4 gal.	—	2-Ply	1-Ply (Full)	3-Course	.25 gal.	As Needed
Material	15-Year	4 gal.	3 gal.	6 gal.	—	2-Ply	1-Ply (Full)	3-Course	.25 gal.	As Needed
NDL	20-Year	4 gal.	3 gal.	8 gal.	—	2-Ply	1-Ply (Full)	3-Course	.25 gal.	As Needed

**Not sold or warranted by Metacrylics*

Acrylic Walking Deck over Existing Walking Deck

WARRANTY*		MATERIALS REQUIRED FOR 100 FT² (1 ROOFING SQUARE)						
Type	Length	Roof & Tile Primer	Gray Base	Acrylic Color	Polyester Fabric	Penetrations	Roof & Tile Sealer	Granules
Material	5-Year	0.5 gal.	—	2 gal.	—	—	.25 gal.	As Needed
NDL	10-Year	0.5 gal.	4 gal.	4 gal.	1-Ply (Full)	3-Course	.25 gal.	As Needed
NDL	15-Year	0.5 gal.	4 gal.	5 gal.	1-Ply (Full)	3-Course	.25 gal.	As Needed
NDL	20-Year	0.5 gal.	4 gal.	6 gal.	1-Ply (Full)	3-Course	.25 gal.	As Needed

**Always consult your Metacrylics® rep or contact Metacrylics for full system specifications.*

Acrylic Coating over Tile

WARRANTY*		MATERIALS REQUIRED FOR 100 FT ² (1 ROOFING SQUARE)			
Type	Length	Roof & Tile Primer	Color Roof & Tile Sealer	Penetrations	Roof & Tile Sealer
Clear	5-Year	0.5 gal. 200 sf/gal.		3-Course	1.25 gal/100 sf (80 sf/gal.)
Color	5-Year	0.5 gal. 200 sf/gal.	1.5 gal./100 (80sf/gal.)	3-Course	—
Color	10-Year	0.5 gal. 200 sf/gal.	2 gal./100 (80sf/gal.)	3-Course	—

Acrylic Coating over Tar & Gravel

WARRANTY*		MATERIALS REQUIRED FOR 100 FT ² (1 ROOFING SQUARE)					
Type	Length	Remove ALL Loose Gravel	Clear Base Or Black Primer	Gray Base	Acrylic Top Coat	Polyester Fabric	Penetrations and 6"/ 9" Fabric
NDL	15-Year	Yes	1.5 gal.	5 gal.	3 gal.	1-Ply (Full)	3-Course
NDL	20-Year	Yes	1.5 gal.	5 gal.	5 gal.	1-Ply (Full)	3-Course
NDL	30-Year	Yes	1.5 gal	7.5 gal.	8 gal.	2-Ply (Full)	5-Course

Silicone Tar & Gravel

WARRANTY*		MATERIALS REQUIRED FOR 100 FT ² (1 ROOFING SQUARE)		
Type	Length	Remove ALL Loose Gravel	Bleed Blocker or Clear Base	High Solids Silicone
NDL	15-Year	Yes	1.5 gal.	3.5 gal.
NDL	20-Year	Yes	1.5 gal.	4.5 gal.

**Always consult your Metacrylics® rep or contact Metacrylics for full system specifications.*



Acrylic Penetration Detail Instructions

GUTTERS

1. Thoroughly pressure wash gutters. Rusted areas must be replaced with new gutters.
2. Apply primer to gutters.
3. 3-course with GEL & FABRIC over all joints. Do not use PEEL & COAT on any gutters!
4. Gutters can be coated with Metacrylics Acrylic White or Metacrylics Silicone White.

PARAPET COPING (CAP)

1. Thoroughly wash or pressure wash parapet coping.
2. Prime coping. Any rusted areas must be primed with black primer instead of clear primer.
3. 3-Course with GEL & FABRIC over the top of the coping (cap) joints and screws.
4. Coat with WHITE topcoat.

NOSINGS, EDGE FLASHINGS, & GRAVEL STOPS

1. Apply primer to all edge flashings. If new, wipe with vinegar or suitable cleaning agent.
2. Apply 3-Course with 6"-9" FABRIC & GEL over the top of the edge flashing.
3. Apply the 3-Course 3" on horizontal flashing and 3" on vertical flashing on the outside wall.

WOOD BLOCKS

1. Lift and remove block.
2. Apply GEL or ACRYLIC BASE & WHITE coating to the area.
3. Allow to dry and replace block.
4. If damage to the roof occurs while removing block, 3-Course with GEL & FABRIC and replace block when dry.

WOOD SLEEPERS (HVAC SUPPORTS)

1. Jack up HVAC unit and remove sleeper.
2. Install Metacrylics 1-Ply or granulated slip sheet under entire area of sleepers and HVAC.
3. When the system is cured, replace sleepers. Be sure that lags attaching HVAC to sleepers are not too long and will not penetrate the roof system.
4. If sleepers cannot be moved or lifted, they must be completely encapsulated. The area under HVAC should be coated with Metacrylics and reinforced with fabric.



Acrylic Penetration Detail Instructions

HVAC DUCTS

1. Thoroughly pressure wash all ducts.
2. 3-Course duct joints with Metacrylics ACRYLIC GEL & fabric or apply 4" peel & Coat Tape over joints.
3. Apply 2 gals/SQ of Metacrylics ACRYLIC WHITE in two applications of 1 gal/SQ of ACRYLIC WHITE.

SKYLIGHTS

1. 3-Course up the side of the skylight curb a minimum of 3" and onto the field area 3". Be careful not to cover any weep (drainage) holes in the skylight.
2. Apply ACRYLIC GEL to all exposed screw heads.

PITCH POCKETS

1. Fill pitch pocket with Metacrylics ACRYLIC GEL.
2. 3-Course with GEL & FABRIC over the top of the pitch pocket and down to the base of the pitch pocket, and at least 3" onto the roof.
3. Apply ACRYLIC GEL to the penetration exiting the pitch pocket for 10" in length.

SCUPPERS & DRAINS

1. Remove all old asphalt, mastic, and roofing materials around and inside the scupper. For drains, remove the drain screen, clamp ring, and screws.
2. Thoroughly apply Metacrylics primer to scuppers and drains.
3. For scuppers:
 1. Apply Metacrylics GEL liberally to the inside and outside of the scupper
 2. Cut a 9"-20" square piece of fabric and embed into the GEL. Sometimes overlapping 4" strips of fabric into GEL may be preferred depending on the size of the scupper.
 3. Embed the fabric at least 4" into and around the inside of the scupper.
 4. Apply a cover coat of Metacrylics ACRYLIC GEL.
4. For drains:
 1. 3-Course with GEL & FABRIC into the drain pipe at least 2".
 2. Take a 20" or 40" square of fabric and place over the drain, cutting a hole out for the drain.
 3. 3-Course then reattach drain ring and screen cover.



Silicone Penetration Detail Instructions

GUTTERS

1. Thoroughly pressure wash gutters. Rusted areas must be replaced with new gutters.
2. Apply Metacrylics Rust Inhibitor Acrylic Black Primer to gutters at the rate of 1 gallon/SQ.
3. 3-course with alternating layers of HS Silicone & fabric over all joints or apply Silicone Gel with no reinforcement over joints. Do not use Peel & Coat on any gutters.

PARAPET COPING (CAP)

1. Thoroughly wash or pressure wash parapet coping.
2. Prime coping. Any rusted areas must be primed with Rust Inhibitor Primer (Metacrylics Rust Inhibitor Acrylic Black Primer or Metacrylics 2-Part Epoxy Primer).
3. 3-Course over the top of the coping (cap) joints and exposed screws with alternating layers of Metacrylics HS Silicone and fabric or apply Metacrylics Peel & Coat tape to coping joints and exposed screws and apply Metacrylics HS Silicone/Silicone Gel over tape.

NOSINGS, EDGE FLASHINGS, & GRAVEL STOPS

1. Apply primer to all edge flashings. If new, wipe with vinegar or suitable cleaning agent.
2. Apply 3-Course with alternating layers of Metacrylics HS Silicone & 6" fabric or Silicone Gel (without fabric reinforcement) over the top of the edge flashing.
3. Apply the 3-Course or Gel up 2"-3" onto flashing and 3"-4" onto roofing surface.

WOOD BLOCKS

1. Lift and remove block.
2. Apply Silicone Gel to the area the block was sitting.
3. Allow to dry and replace block.
4. If damage to the roof occurs while removing block, 3-Course with HS Silicone or Silicone Gel & Fabric and replace block when dry.

WOOD SLEEPERS (HVAC SUPPORTS)

1. Jack up HVAC unit and remove sleeper.
2. Apply Metacrylics HS Silicone at the rate of 2 gallons/SQ in the area the wood sleeper had been or granulated slip sheet under entire area of sleepers and HVAC.
3. When the system is cured, replace sleepers. Be sure that lags attaching HVAC to sleepers are not too long and will not penetrate the roof system.
4. If sleepers cannot be moved or lifted, they must be completely encapsulated with Metacrylics HS Silicone. The area under HVAC should be coated with Metacrylics HS Silicone.



Silicone Penetration Detail Instructions

HVAC DUCTING

1. Thoroughly pressure wash all ducts.
2. 3-Course duct joints with alternating layers of Metacrylics HS Silicone & fabric.
3. Apply 2 gals/SQ of Metacrylics HS Silicone in two applications of 1 gal/SQ of HS Silicone.

SKYLIGHTS

1. 3-Course with alternating layers of Metacrylics HS Silicone and fabric up the side of the skylight curb a minimum of 3" and onto the roof surface area 3". Be careful not to cover any weep (drainage) holes in the skylight.
2. Apply Silicone Gel to all exposed screw heads.

PITCH POCKETS

1. Fill pitch pocket with Metacrylics HS Silicone or Silicone Gel
2. 3-Course with HS Silicone & fabric over the top of the pitch pocket and down to the base of the pitch pocket, and at least 3" onto the roof.
3. Apply Silicone Gel up and around the penetration coming from the pitch pocket a minimum of 6".

SCUPPERS & DRAINS

1. Remove all old asphalt, mastic, and roofing materials around and inside the scupper. For drains, remove the drain screen, clamp ring, and screws.
2. Thoroughly apply Metacrylics primer to scuppers and drains.
3. For scuppers:
 1. Apply Metacrylics HS Silicone liberally to the inside and outside of the scupper
 2. Cut an appropriate size piece of fabric for the width of the scupper and embed into the Silicone inside and outside of scupper a minimum of 4".
 3. Apply a cover coat of Metacrylics HS Silicone to saturate and encapsulate the fabric.
4. For drains:
 1. 3-Course with alternating layers of HS Silicone or Silicone Gel & fabric into the drain pipe at least 2". Use a 20" or 40" square piece of fabric and place over the drain, cutting a hole out for the drain.

TOP COATS

ITEM NUMBER	Contractor Grade Acrylic	PACKAGING
401058	Contractor Grade Acrylic 5 gallon WHITE	Pail
401553	Contractor Grade Acrylic 55 gallon WHITE	Drum
401751	Contractor Grade Acrylic White 275 gallon WHITE	Tote
Extreme Weather Acrylic		
201023	Extreme Weather Acrylic 2 gallon WHITE	Pail
201054	Extreme Weather Acrylic 5 gallon WHITE	Pail
201559	Extreme Weather Acrylic 55 gallon WHITE	Drum
201757	Extreme Weather Acrylic 275 gallon WHITE	Tote
881027	Extreme Weather Acrylic 2 gallon WHITE QUICKSET	Pail
881058	Extreme Weather Acrylic 5 gallon WHITE QUICKSET	Pail
881553	Extreme Weather Acrylic 55 gallon WHITE QUICKSET	Drum
881751	Extreme Weather Acrylic 275 gallon WHITE QUICKSET	Tote
220024	Extreme Weather Acrylic 2 gallon GRAY	Pail
220055	Extreme Weather Acrylic 5 gallon GRAY	Pail
220550	Extreme Weather Acrylic 55 gallon GRAY	Drum
220758	Extreme Weather Acrylic 275 gallon GRAY	Tote
230023	Extreme Weather Acrylic 2 gallon STORM CLOUD	Pail
230054	Extreme Weather Acrylic 5 gallon STORM CLOUD	Pail
240106	Extreme Weather Acrylic 55 gallon STORM CLOUD	Drum
240756	Extreme Weather Acrylic 275 gallon STORM CLOUD	Tote
210025	Extreme Weather Acrylic 2 gallon BEIGE	Pail
210056	Extreme Weather Acrylic 5 gallon BEIGE	Pail
240110	Extreme Weather Acrylic 55 gallon BEIGE	Drum
240111	Extreme Weather Acrylic 275 gallon BEIGE	Tote
250021	Extreme Weather Acrylic 2 gallon DESERT SAND	Pail
254052	Extreme Weather Acrylic 5 gallon DESERT SAND	Pail
240114	Extreme Weather Acrylic 55 gallon DESERT SAND	Drum
240115	Extreme Weather Acrylic 275 gallon DESERT SAND	Tote
240022	Extreme Weather Acrylic 2 gallon CUSTOM COLOR	Pail
240053	Extreme Weather Acrylic 5 gallon CUSTOM COLOR	Pail
240558	Extreme Weather Acrylic 55 gallon CUSTOM COLOR	Drum
240756	Extreme Weather Acrylic 275 gallon CUSTOM COLOR	Tote
Extreme Performance Acrylic		
215002	Extreme Performance Acrylic 5 gallon WHITE	Pail
215003	Extreme Performance Acrylic 55 gallon WHITE	Drum
215004	Extreme Performance Acrylic 275 gallon WHITE	Tote
884028	Extreme Performance Acrylic 2 gallon WHITE QUICKSET	Pail
884059	Extreme Performance Acrylic 5 gallon WHITE QUICKSET	Pail
884554	Extreme Performance Acrylic 55 gallon WHITE QUICKSET	Drum
884752	Extreme Performance Acrylic 275 gallon WHITE QUICKSET	Tote
Extreme Performance Plus		
216058	Extreme Performance Plus Acrylic 5 gallon WHITE	Pail
216553	Extreme Performance Plus Acrylic 55 gallon WHITE	Drum
216751	Extreme Performance Plus Acrylic 275 gallon WHITE	Tote
Q COAT		
885025	Q COAT Acrylic 2 gallon WHITE	Pail
885056	Q COAT Acrylic 5 gallon WHITE	Pail
885551	Q COAT Acrylic 55 gallon WHITE	Drum
885759	Q COAT Acrylic 275 gallon WHITE	Tote
High Solids Silicone		
600055	High Solids Silicone 5 gallon WHITE—Roll Grade	Pail
600551	High Solids Silicone 55 gallon WHITE—Spray Grade	Drum
600253	High Solids Silicone 275 gallon WHITE—Spray Grade	Tote
601052	High Solids Silicone 5 gallon GRAY	Pail
601557	High Solids Silicone 50 gallon GRAY	Drum
600625	High Solids Silicone 5 gallon TAN	Pail
600635	High Solids Silicone 5 gallon COLOR	Pail
Roof & Tile Sealer		
110011	Roof & Tile Sealer 1 gallon CLEAR	Pail
110059	Roof & Tile Sealer 5 gallon CLEAR	Pail
110554	Roof & Tile Sealer 55 gallon CLEAR	Drum
110752	Roof & Tile Sealer 275 gallon CLEAR	Tote
280011	Roof & Tile Sealer 1 gallon COLOR	Pail
280029	Roof & Tile Sealer 2 gallon COLOR	Pail
280059	Roof & Tile Sealer 5 gallon COLOR	Pail
280554	Roof & Tile Sealer 55 gallon COLOR	Drum
280555	Roof & Tile Sealer 275 gallon COLOR	Tote

BASE COATS

ITEM NUMBER	Contractor Grade Acrylic	PACKAGING
450056	Contractor Grade Acrylic 5 gallon CLEAR BASE	Pail
450551	Contractor Grade Acrylic 55 gallon CLEAR BASE	Drum
400759	Contractor Grade Acrylic 275 gallon CLEAR BASE	Tote
400051	Contractor Grade Acrylic 5 gallon GRAY BASE	Pail
400556	Contractor Grade Acrylic 55 gallon GRAY BASE	Drum
400754	Contractor Grade Acrylic 275 gallon GRAY BASE	Tote
Extreme Weather Acrylic		
150024	Extreme Weather Acrylic 2 gallon CLEAR BASE	Pail
150055	Extreme Weather Acrylic 5 gallon CLEAR BASE	Pail
150550	Extreme Weather Acrylic 55 gallon CLEAR BASE	Drum
150758	Extreme Weather Acrylic 275 gallon CLEAR BASE	Tote
883021	Extreme Weather Acrylic 2 gallon CLEAR BASE QUICKSET	Pail
883052	Extreme Weather Acrylic 5 gallon CLEAR BASE QUICKSET	Pail
883557	Extreme Weather Acrylic 55 gallon CLEAR BASE QUICKSET	Drum
883755	Extreme Weather Acrylic 275 gallon CLEAR BASE QUICKSET	Tote
200026	Extreme Weather Acrylic 2 gallon GRAY BASE	Pail
200057	Extreme Weather Acrylic 5 gallon GRAY BASE	Pail
200552	Extreme Weather Acrylic 55 gallon GRAY BASE	Drum
200750	Extreme Weather Acrylic 275 gallon GRAY BASE	Tote
882024	Extreme Weather Acrylic 2 gallon GRAY BASE QUICKSET	Pail
882055	Extreme Weather Acrylic 5 gallon GRAY BASE QUICKSET	Pail
882550	Extreme Weather Acrylic 55 gallon GRAY BASE QUICKSET	Drum
882758	Extreme Weather Acrylic 275 gallon GRAY BASE QUICKSET	Tote
180021	Extreme Weather Acrylic 2 gallon BLACK BASE	Pail
180052	Extreme Weather Acrylic 5 gallon BLACK BASE	Pail
180557	Extreme Weather Acrylic 55 gallon BLACK BASE	Drum
180755	Extreme Weather Acrylic 275 gallon BLACK BASE	Tote

PRIMERS

ITEM NUMBER	Rust Inhibitor	PACKAGING
021027	Black Primer 2 gallon	Pail
021058	Black Primer 5 gallon	Pail
021553	Black Primer 55 gallon	Drum
021751	Black Primer 275 gallon	Tote
Bleed Block Primer		
112022	Bleed Blocker Primer 2 gallon	Pail
112053	Bleed Blocker Primer 5 gallon	Pail
112558	Bleed Blocker Primer 55 gallon	Drum
112756	Bleed Block Primer 275 gallon	Tote
Roof & Tile		
19024M	Roof & Tile Primer 2 gallon	Pail
19055M	Roof & Tile Primer 5 gallon	Pail
19550M	Roof & Tile Primer 55 gallon	Drum
19758M	Roof & Tile Primer 275 gallon	Tote
EPDM Rinse		
003023	EPDM Rinse 2 gallon	Pail
003054	EPDM Rinse 5 gallon	Pail
700103	EPDM Rinse 55 gallon	Drum
TPO		
004020	TPO Primer 2 gallon	Pail
004051	TPO Primer 5 gallon	Pail
004556	TPO Primer 55 gallon	Drum
004754	TPO Primer 275 gallon	Tote
Epoxy		
660651	Epoxy Primer Kit 1 gallon	Pail
600650	Epoxy Primer Kit 5 gallon	Pail

GELS/LIQUID FLASHING

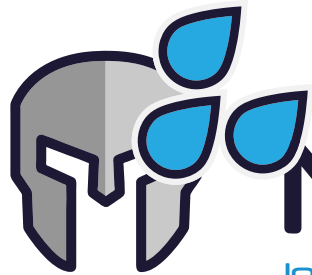
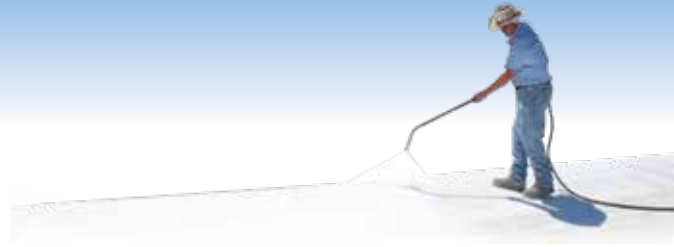
ITEM NUMBER	Acrylic Gel	PACKAGING
25018	Acrylic Gel 1 gallon WHITE	Pail
25025	Acrylic Gel 2 gallon WHITE	Pail
25353	Acrylic Gel 3.5 gallon WHITE	Pail
25056	Acrylic Gel 5 gallon WHITE	Pail
225012	Acrylic Gel 1 gallon CLEAR	Pail
225029	Acrylic Gel 2 gallon CLEAR	Pail
225357	Acrylic Gel 3.5 gallon CLEAR	Pail
225050	Acrylic Gel 5 gallon CLEAR	Pail
225418	Acrylic Gel 1 gallon GRAY	Pail
225424	Acrylic Gel 2 gallon GRAY	Pail
225425	Acrylic Gel 3.5 gallon GRAY	Pail
225455	Acrylic Gel 5 gallon GRAY	Pail
228013	Acrylic Gel 1 gallon BLACK	Pail
228020	Acrylic Gel 2 gallon BLACK	Pail
228358	Acrylic Gel 3,5 gallon BLACK	Pail
228051	Acrylic Gel 5 gallon BLACK	Pail
Silicone Gel		
600024	Silicone Gel 2 gallon WHITE	Pail
600030	Silicone Gel 2 gallon GRAY	Pail

POLYESTER FABRICS

ITEM NUMBER	Description	PACKAGING
324401	10 Square (40" x 324") #T272 SOFT	Roll
164403	10 Square (40" x 324") #T326 FIRM	Roll
164402	10 Square (42" x 300") #201 WARP KNIT	Roll
108407	3 Square (40" x 108") #T272 SOFT	Roll
030241	1 Square (40" x 32") #T272 SOFT	Roll
160207	20" x 160' #T272 SOFT	Roll
160122M	12" x 160' #T272 SOFT	Roll
160092	9" x 160' #T272 SOFT	Roll
160061	6" x 160' #T272 SOFT	Roll
160047	4" x 160' #T272 SOFT	Roll
160030	3" x 160' #T272 SOFT	Roll
160023	2" x 160' #T272 SOFT	Roll
161129	12" x 324' #T272 SOFT	Roll
164409	20" x 300" #201 WARP KNIT	Roll
164410	12" x 300" #201 WARP KNIT	Roll
164413	9" x 300 #201 WARP KNIT	Roll
164411	6" x 300 #201 WARP KNIT	Roll
164412	4" x 300' #201 WARP KNIT	Roll

ACCESSORIES/MISCELLANEOUS ITEMS

ITEM NUMBER	Description
100401	4" x 100 Peel & Coat Reinforced Tape
50409	6" x 50' Peel & Coat Reinforced Tape
002019	#30 Silica Sand 1 gallon
001012	Rubber Granules 1 gallon
000168	3" Brushes
000169	4" Brushes
000095	9" Roller Cover 3/4"
000093	9" Roller Cover Textured
000099	9" Professional Roller Frames



Metacrylics®

Innovation in coatings since 1974

365 Obata Court, Gilroy, CA 95020
PHONE: (408) 280 -7733 | FAX: (408) 280-6329
metacrylics.com

IPS
ROOFING PRODUCTS™